

## CONSERVATION LAWS WITH A NON-LOCAL FLOW APPLICATION TO PEDESTRIAN TRAFFIC.

MAGALI LÉCUREUX-MERCIER<sup>1</sup>

**Abstract.** In this note, we introduce some models of pedestrian traffic and prove existence and uniqueness of solutions for these models.

**Résumé.** On présente ici différents modèles de trafic piéton et on prouve l'existence et l'unicité des solutions pour ces modèles.

### 1. INTRODUCTION

In the last decades, the crowds' dynamics has attracted a lot of scientific interest. A first reason of this interest is to understand how crowd disasters happened in some panic events, for example at the end of football play, during concerts, in the case of fire, or in place of pilgrimage (e.g. on Jamarat Bridge in Saudi Arabia, see [13]). Another reason lies in architecture of buildings such as subway stations or stadiums, where a lot of pedestrians are crossing. The goals here are consequently twofold: in one hand we want to understand the behavior of pedestrians in panic and adapt the regulation of traffic in order to avoid deaths; in the other hand, we want to modelize the interaction of several kinds of pedestrians with different objectives and in particular study how the geometry influences the general pattern.

In a macroscopic setting, a population is described by its density  $\rho$  which satisfies the conservation law

$$\partial_t \rho + \operatorname{Div}(\rho V(t, x, \rho)) = 0, \quad \rho(0, \cdot) = \rho_0, \quad (1)$$

where  $V(t, x, \rho)$  is a vector field describing the velocity of the pedestrians depending on the time  $t \geq 0$ , the space  $x \in \mathbb{R}^N$  and the density  $\rho$ . According to the choice of  $V$ , various behaviors can be observed. Several authors already studied pedestrian traffic in two dimensions space ( $N = 2$ ). Some of these models are local in  $\rho$ , that is to say  $V$  depends on the local density  $\rho(t, x)$  [2, 8, 15, 16, 20, 21]; other models use not only the local density  $\rho(t, x)$  but the entire distribution of  $\rho$ , for example they depend on the convolution product  $\rho(t) * \eta$  [11, 22]. Here, in the line of preceding papers [4–7], we present nonlocal macroscopic models for pedestrian traffic, we study these models and compare their properties.

Our first aim is to modelize the behavior of pedestrians in different situations: crowd behaves indeed differently in panic or in a normal situation where courtesy rules do apply. We also introduce models in the case of a population interacting with an individual, and in the case of several populations with different objectives. For instance, we want to include in our study the case of two populations crossing in a corridor.

Second, we want to study the introduced models and prove existence and uniqueness of solutions under various sets of hypotheses. We will use two kinds of arguments: the first one comes from Kružkov theory [17, 18], the

---

<sup>1</sup> Technion - Israel Institute of Technology, Amado Building, Haifa, 32000 Israel, [mercier@tx.technion.ac.il](mailto:mercier@tx.technion.ac.il).

second one from the optimal transport theory. We want to prove existence and uniqueness of solutions for the various models presented below. Let us concentrate on the case of *pedestrians in panic*:

$$\partial_t \rho + \text{Div}(\rho v(\rho * \eta) \vec{v}(x)) = 0. \quad (2)$$

All the proofs of existence and uniqueness in this note are based on the following idea: let us fix the nonlocal term and, instead of (2), we study the Cauchy problem

$$\partial_t \rho + \text{Div}(\rho v(r * \eta) \vec{v}(x)) = 0, \quad \rho(0) = \rho_0, \quad (3)$$

where  $r$  is a given function. Then, we introduce the application

$$\mathcal{Q} : \left\{ \begin{array}{ccc} r & \mapsto & \rho \\ X & \rightarrow & X \end{array} \right\}, \quad (4)$$

where the space  $X$  has to be chosen so that

- (a):  $X$  is equipped with a distance  $d$  that makes  $X$  complete;
- (b): the application  $\mathcal{Q}$  is well-defined: the solution  $\rho \in X$  exists and is unique (for a fixed  $r$ );
- (c): the application  $\mathcal{Q}$  is a contraction.

Once we have fulfilled these conditions, we can prove existence of a solution using a fixed point argument.

Note that, in the modelization of pedestrian traffic, the space dimension  $N$  has to be equal to two, but our results are in fact true for all  $N \in \mathbb{N}$ . For instance, they can be adapted in dimension  $N = 3$  to modelize the behavior of fishes or birds. Consequently, we keep here a general  $N$ , even if we essentially think to the case  $N = 2$ .

This note is organized as follows: in Section 2, we describe some nonlocal models and their properties. In Section 3 we study one of these models through Kruřkov theory and in Section 4 we study the same model through optimal transport theory.

## 2. PEDESTRIAN TRAFFIC MODELIZATION

### 2.1. One-Population model

#### 2.1.1. Pedestrian in panic

The first model we present corresponds to pedestrians in panic and was studied in [5,6], in collaboration with R. M. Colombo and M. Herty. A panic phenomenon appears under special circumstances in crowded events. In these cases, the people are no longer rational and try, no matter how, to reach their target. Let us denote  $\rho(t, x)$  the density of pedestrians at time  $t$  and position  $x \in \mathbb{R}^N$ . We consider the Cauchy problem:

$$\partial_t \rho + \text{Div}(\rho v(\eta * \rho(t, x)) \vec{v}(x)) = 0; \quad \rho(0, \cdot) = \rho_0. \quad (5)$$

Here,  $v$  is a real function describing the speed of the pedestrians. This function does not depend on the local density  $\rho(t, x)$  but on the averaged density  $\rho(t) * \eta(x) = \int_{\mathbb{R}^N} \rho(t, x - y) \eta(y) dy$ . The vector field,  $\vec{v}(x)$  describes the direction that the pedestrian located in  $x$  will follow, independently from the distribution of the pedestrians' density. Note that we are working here on the all of  $\mathbb{R}^N$  and not on a subset of  $\mathbb{R}^N$ ; thus, we are *not* working on a restriction to a room, for example. However, we can still introduce the presence of walls and obstacles in the choice of the vector field  $\vec{v}$ . Let us denote  $\Omega \subset \mathbb{R}^N$  the space where the pedestrians are authorized to walk, e.g. a room. If we choose  $\vec{v}(x)$  in a nice way (for example we can require that on the walls, i.e. for all  $x \in \partial\Omega$ ,  $\vec{v}(x)$  coincides with the entering normal to  $\Omega$ ), then we can conclude to the invariance of the room. More precisely, if the initial density has support on some closed set  $\Omega \subset \mathbb{R}^N$ , then the solution will have support contained in  $\Omega$  for all time. This remark allows us to avoid considering any boundaries and to have solutions on all  $\mathbb{R}^N$ .

Using the Kruřkov theory on classical scalar conservation laws, we are able to prove:

**Theorem 2.1** (see [6]). *Let  $\rho_0 \in (\mathbf{L}^1 \cap \mathbf{L}^\infty \cap \mathbf{BV})(\mathbb{R}^N, \mathbb{R}_+)$ . Assume  $v \in (\mathcal{C}^2 \cap \mathbf{W}^{2,\infty})(\mathbb{R}, \mathbb{R})$ ,  $\vec{v} \in (\mathcal{C}^2 \cap \mathbf{W}^{2,1})(\mathbb{R}^N, \mathbb{R}^N)$ ,  $\eta \in (\mathcal{C}^2 \cap \mathbf{W}^{2,\infty})(\mathbb{R}^N, \mathbb{R})$ . Then there exists a unique weak entropy solution  $\rho = S_t \rho_0 \in \mathcal{C}^0(\mathbb{R}_+, \mathbf{L}^1(\mathbb{R}^N, \mathbb{R}_+))$  to (5) with initial condition  $\rho_0$ . Furthermore we have the estimate*

$$\|\rho(t)\|_{\mathbf{L}^\infty} \leq \|\rho_0\|_{\mathbf{L}^\infty} e^{Ct}, \quad (6)$$

where the constant  $C$  depends on  $v$ ,  $\vec{v}$  and  $\eta$ .

For the definition of weak entropy solutions see Section 3; the proof is deferred to Section 3.2.1. Note that in Theorem 2.1, the hypotheses are very strong. Let us denote  $\mathcal{P}(\mathbb{R}^N)$  the set of probability measures on  $\mathbb{R}^N$  and  $\mathcal{M}^+(\mathbb{R}^N)$  the set of positive measures on  $\mathbb{R}^N$ . In collaboration with G. Crippa, using now some tools from optimal transport theory, we obtained the better result:

**Theorem 2.2** (see [9]). *Let  $\rho_0 \in \mathcal{M}^+(\mathbb{R}^N)$ . Assume  $v \in (\mathbf{L}^\infty \cap \text{Lip})(\mathbb{R}, \mathbb{R})$ ,  $\vec{v} \in (\mathbf{L}^\infty \cap \text{Lip})(\mathbb{R}^N, \mathbb{R}^N)$ ,  $\eta \in (\mathbf{L}^\infty \cap \text{Lip})(\mathbb{R}^N, \mathbb{R}_+)$ . Then there exists a unique weak measure solution  $\rho \in \mathbf{L}^\infty(\mathbb{R}_+, \mathcal{M}^+(\mathbb{R}^N))$  to (5) with initial condition  $\rho_0$ .*

*If furthermore  $\rho_0 \in \mathbf{L}^1(\mathbb{R}^N, \mathbb{R}_+)$  then for all  $t \geq 0$ , the solution  $\rho$  satisfies also  $\rho(t) \in \mathbf{L}^1(\mathbb{R}^N, \mathbb{R}_+)$ .*

For the definition of weak measure solution see Section 4; the proof is deferred to Section 4.2.

Note that for the model (5), there is a priori no uniform  $\mathbf{L}^\infty$  bound on the density. Indeed, heuristically, considering the case in which the density is maximal, equal to 1, on the trajectory of a pedestrian located in  $x$ . If the averaged density around  $x$  is strictly less than 1 (because, for example there is no one behind this pedestrian), then the speed  $v(\rho * \eta)$  will be strictly positive, which means the pedestrian in  $x$  will try to go forward, even though there is a queue in front of him. Consequently, we expect the density to become larger than one.

This behavior is not really unexpected in the case of panic. In fact, in some events the density attained up to 10 persons per square meter, which is obviously too much and a cause of deaths (see [13]). Consequently, it is quite satisfactory to recover this behavior. One of our goal in this context is then to introduce a cost functional allowing to characterize the cases in which the density is too high, and to find extrema of this functional. Let us introduce

$$J_T(\rho_0) = \int_0^T \int_{\Omega} f(S_t \rho_0) dx,$$

where  $\Omega \subset \mathbb{R}^N$  is the room,  $\rho_0$  is the initial condition and  $S_t \rho_0$  is the semi-group generated by Theorem 2.1. We choose the function  $f \in \mathcal{C}^1(\mathbb{R}, \mathbb{R}_+)$  so that it is equal to zero for any density  $\rho$  less than a fixed threshold  $\rho_c$  and so that it is strictly increasing on  $[\rho_c, +\infty[$ . Consequently, the functional  $J_T$  above allows to characterize the solutions with too high density and in particular it vanishes if the set  $\{(t, x) \in [0, T] \times \mathbb{R}^N : S_t \rho(x) \geq \rho_c\}$  has measure zero. We are then interested in finding the minima of this cost functional.

Using the Kruřkov theory we prove the following differentiability result:

**Theorem 2.3** (see [5, 6]). *Let  $\rho_0 \in (\mathbf{W}^{2,\infty} \cap \mathbf{W}^{2,1})(\mathbb{R}^N, \mathbb{R}_+)$ ,  $r_0 \in (\mathbf{W}^{1,1} \cap \mathbf{L}^\infty)(\mathbb{R}^N, \mathbb{R})$  and denote  $\rho = S_t \rho_0$ . Assume  $v \in (\mathcal{C}^4 \cap \mathbf{W}^{2,\infty})(\mathbb{R}, \mathbb{R})$ ,  $\vec{v} \in (\mathcal{C}^3 \cap \mathbf{W}^{2,1})(\mathbb{R}^N, \mathbb{R}^N)$ ,  $\eta \in (\mathcal{C}^3 \cap \mathbf{W}^{2,\infty})(\mathbb{R}^N, \mathbb{R}_+)$ . Then there exists a unique weak entropy solution  $r = \Sigma_t^\rho r_0$  to the Cauchy problem*

$$\partial_t r + \text{Div}(r v(\rho * \eta) \vec{v}(x)) = -\text{Div}(\rho v'(\rho * \eta) \vec{v}(x)), \quad r(0) = r_0. \quad (7)$$

*Furthermore, the semi-group  $S_t$  obtained in Theorem 2.1 is Gâteaux-differentiable, that is to say, for all  $\rho_0 \in (\mathbf{W}^{2,1} \cap \mathbf{W}^{2,\infty})(\mathbb{R}^N, \mathbb{R}_+)$ ,  $r_0 \in (\mathbf{W}^{1,1} \cap \mathbf{L}^\infty)(\mathbb{R}^N, \mathbb{R})$ ,*

$$\lim_{h \rightarrow 0} \left\| \frac{S_t(\rho_0 + h r_0) - S_t \rho_0}{h} - \Sigma_t^\rho r_0 \right\|_{\mathbf{L}^1} = 0.$$

The proof is deferred to Section 3.2.2.

It is not possible to obtain the same result by the use of optimal transport theory. Indeed, it seems already not possible to find a good definition of Gâteaux differentiability on the set of probability measures equipped with the Wasserstein distance of order 1.

### 2.1.2. Orderly crowd

In opposite to the previous model, for a model of orderly crowd it is required to have a uniform  $\mathbf{L}^\infty$  bound on the density. In collaboration with R. M. Colombo and M. Garavello [4], we studied the equation

$$\partial_t \rho + \operatorname{Div} \left[ \rho v(\rho) \left( \vec{v}(x) - \frac{\nabla(\rho * \eta)}{\sqrt{1 + \|\nabla(\rho * \eta)\|^2}} \right) \right] = 0; \quad (8)$$

with  $\rho_0 \in (\mathbf{L}^1 \cap \mathbf{L}^\infty \cap \mathbf{BV})(\mathbb{R}^N; \mathbb{R})$ .

In this model, the speed  $v$  depends on the local density  $\rho(t, x)$ , which allows to prove some uniform bound in  $\mathbf{L}^\infty$ . The preferred direction of the pedestrians is still  $\vec{v}(x)$ , but they deviate from their optimal path trying to avoid entering regions with higher densities. Indeed,  $(\rho * \eta)$  is an average of the crowd density around  $x$  and  $-\nabla(\rho * \eta)$  is a vector going in the direction opposite to the area of maximal averaged density. Due to the nonlinearity of the flow with respect to the local  $\rho$ , it is no longer possible to use optimal transport theory. Hence, we use Kruřkov theory, to prove existence and uniqueness of solutions. We obtain the theorem:

**Theorem 2.4** (see [4]). *Assume that  $v \in \mathcal{C}^2([0, 1], \mathbb{R}_+)$  satisfies  $v(1) = 0$ , that  $\vec{v} \in (\mathcal{C}^2 \cap \mathbf{W}^{2,1} \cap \mathbf{W}^{1,\infty})(\mathbb{R}^N, \mathbb{R}^N)$ , and that  $\eta \in (\mathcal{C}^3 \cap \mathbf{W}^{3,1} \cap \mathbf{W}^{2,\infty})(\mathbb{R}^N, \mathbb{R})$ . Then, for any  $\rho_0 \in (\mathbf{L}^1 \cap \mathbf{L}^\infty \cap \mathbf{BV})(\mathbb{R}^N, [0, 1])$ , there exists a unique weak entropy solution  $\rho \in \mathcal{C}^0(\mathbb{R}_+, \mathbf{L}^1(\mathbb{R}^N, [0, 1]))$ .*

The proof of this theorem relies on Kruřkov theory (see Section 3). Note that for this model the density is uniformly bounded in  $\mathbf{L}^\infty$ , contrarily to the panic model, in which the  $\mathbf{L}^\infty$  norm can grow exponentially in time.

Some difficulties now appear in proving that the pedestrians remain in the authorized area. Let us introduce the following invariance property:

**(P):** Let  $\Omega \subset \mathbb{R}^N$  be region where the pedestrians are allowed to walk. The model (8) is invariant with respect to  $\Omega$  if

$$\operatorname{Supp}(\rho_0) \subset \Omega \quad \Rightarrow \quad \operatorname{Supp}(\rho(t)) \subset \mathbb{R}^N \quad \text{for all } t \geq 0. \quad (9)$$

To obtain that **(P)** is satisfied, we have to require the preferred direction to be strongly entering the room (see [4, Proposition 3.1 & Appendix A]).

Some interesting phenomena show up through numerical computations. First, when considering a crowd walking along a corridor, we observe the formation of lanes (see Figure 1).

Furthermore, this phenomenon seems very stable with respect to initial conditions and geometry. Indeed considering the room and initial distribution as in Figure 2, adding some various obstacles, we still have lanes, at least in large space (see Figures 3).

A further remarkable property of the model (8) is that it captures the following well-known, although sometimes counter intuitive phenomenon (Braess paradox): the evacuation time through an exit can be reduced by carefully positioning suitable “obstacles” that direct the outflow (see for instance [12] and the references therein). Indeed, looking at Figure 4, we observe that the time of exist with obstacles is slightly shorter than the one without any obstacle.

## 2.2. Several populations

A natural wish now is to extend the previous models to the case of several population with different objectives.

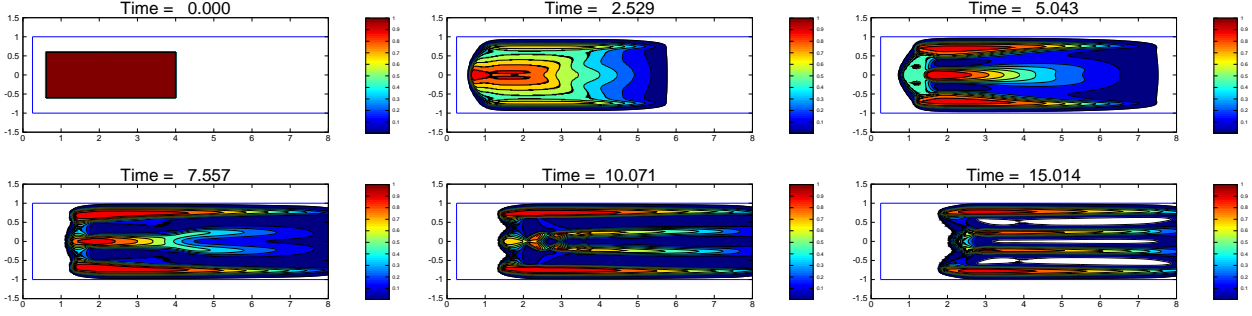


FIGURE 1. Solution to (8) at times  $t = 0, 2.529, 5.043, 7.557, 10.071, 15.014$ . First 3 lanes are formed, then the middle lane bifurcates forming the fourth lane. Picture from [4].

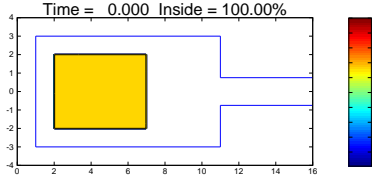


FIGURE 2. Initial datum and room geometry. Picture from [4].

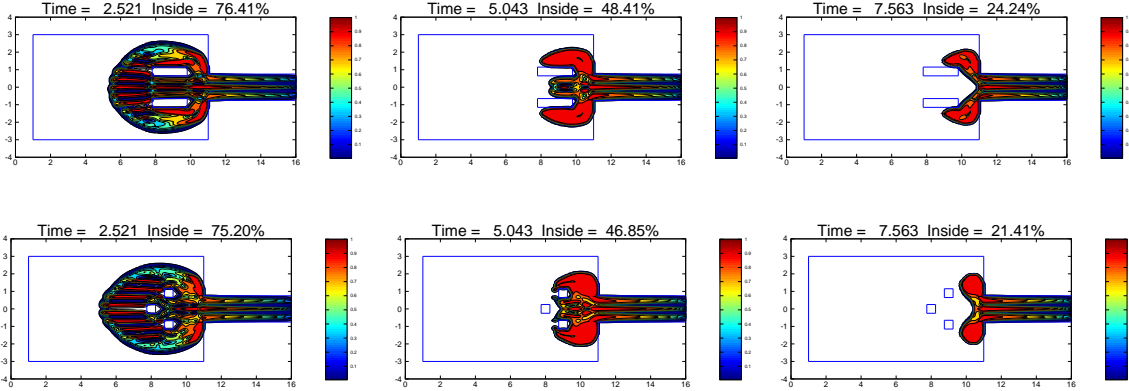


FIGURE 3. Solution to (8) with different geometries, computed at time  $t = 2.521, 5.043$  and  $7.563$ . Picture from [4].

### 2.2.1. Panic

With several populations, we have to consider several densities and several equations. For two populations, extending the idea of the equation (5) to the case of several populations, we obtain the system

$$\begin{cases} \partial_t \rho_1 + \text{Div}(\rho_1 v(\rho_1 * \eta_1 + \rho_2 * \eta_2) \vec{v}_1(x)) = 0, \\ \partial_t \rho_2 + \text{Div}(\rho_2 v(\rho_1 * \eta_1 + \rho_2 * \eta_2) \vec{v}_2(x)) = 0. \end{cases} \quad (10)$$

Here we consider that the speed  $v$  depends on the average of the total density  $\rho_1 + \rho_2$ . Furthermore, the difference of goals of the populations 1 and 2 is reflected in the choice of different preferred directions  $\vec{v}_1$  and  $\vec{v}_2$ .

We are able to prove theorems similar to the ones of section 2.1.1. In collaboration with R. M. Colombo [6], we obtained:

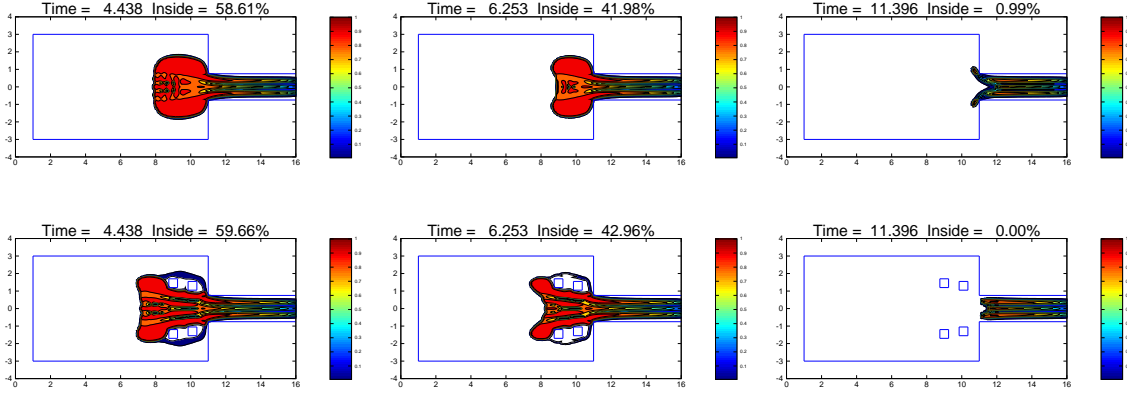


FIGURE 4. Solution to (8) with  $\varepsilon = 0.2$ , at times  $t = 4.438, 6.253, 11.396$ . On the first line, no obstacle is present. On the second line, 4 columns direct the crowd flow. The evacuation time in the latter case is *shorter* than in the former one. Picture from [4].

**Theorem 2.5** (see [6]). *Let  $\rho_0 = (\rho_{0,1}, \rho_{0,2}) \in (\mathbf{L}^1 \cap \mathbf{L}^\infty \cap \mathbf{BV})(\mathbb{R}^N, \mathbb{R}_+^2)$ . Assume that, for  $i \in \{1, 2\}$ ,  $v_i \in (\mathcal{C}^2 \cap \mathbf{W}^{2,\infty})(\mathbb{R}, \mathbb{R})$ ,  $\vec{v}_i \in (\mathcal{C}^2 \cap \mathbf{W}^{2,1})(\mathbb{R}^N, \mathbb{R}^N)$ ,  $\eta_i \in (\mathcal{C}^2 \cap \mathbf{W}^{2,\infty})(\mathbb{R}^N, \mathbb{R})$ . Then there exists a unique weak entropy solution  $\rho = S_t \rho_0 \in \mathcal{C}^0(\mathbb{R}_+, \mathbf{L}^1(\mathbb{R}^N, \mathbb{R}_+^2))$  to (5) with initial condition  $\rho_0$ . Furthermore we have the estimate*

$$\|\rho(t)\|_{\mathbf{L}^\infty} \leq \|\rho_0\|_{\mathbf{L}^\infty} e^{Ct}, \quad (11)$$

where the constant  $C$  depends on  $v, \vec{v}$  and  $\eta$

Similarly as for one population, it is possible with several populations to prove the Gâteaux-differentiability thanks to Kružkov theory (see [6, Theorem 2.2]).

As in Theorem 2.5, the hypotheses of Theorem 2.5 are very strong. In collaboration with G. Crippa [9], using tools from optimal transport theory, we obtained the better result:

**Theorem 2.6** (see [9]). *Let  $\rho_0 \in \mathcal{P}(\mathbb{R}^N)^2$ . Assume  $v_i \in (\mathbf{L}^\infty \cap \text{Lip})(\mathbb{R}, \mathbb{R})$ ,  $\vec{v}_i \in (\mathbf{L}^\infty \cap \text{Lip})(\mathbb{R}^N, \mathbb{R}^N)$ ,  $\eta_i \in (\mathbf{L}^\infty \cap \text{Lip})(\mathbb{R}^N, \mathbb{R}_+)$ . Then there exists a unique weak measure solution  $\rho \in \mathbf{L}^\infty(\mathbb{R}_+, \mathcal{P}(\mathbb{R}^N)^2)$  to (10) with initial condition  $\rho_0$ .*

*If furthermore  $\rho_0 \in \mathbf{L}^1(\mathbb{R}^N, \mathbb{R}_+)$  then for all  $t \geq 0$ , we have  $\rho(t) \in \mathbf{L}^1(\mathbb{R}^N, \mathbb{R}_+)$ .*

The idea of the proof for this theorem is given in Section 4.

**Interaction continuum / individuals.** Note that in the framework of Theorem 2.6, we are dealing with measure solutions. This context allows us to describe a coupling between a group of density  $\rho_1$  and an individual located in  $p(t)$ . Indeed, let us assume that  $\rho_1 \in \mathbf{L}^\infty(\mathbb{R}_+, \mathbf{L}^1(\mathbb{R}^N, \mathbb{R}_+))$  and  $\rho_2 = \delta_{p(t)}$  is a Dirac measure. Then we have the following ODE/PDE coupling:

$$\begin{cases} \partial_t \rho_1 + \text{div} \left( \rho_1 v \left( \rho_1 * \eta_1(x) + \eta_2(x - p(t)) \right) \vec{v}_1(x) \right) = 0, \\ \dot{p}(t) = v \left( \rho_1 * \eta_1(p(t)) + \eta_2(0) \right) \vec{v}_2(p(t)). \end{cases}$$

### 2.2.2. Orderly crowd

We now extend (8) to the case of several populations. We consider here not only that  $\rho_1$  and  $\rho_2$  have two different goals, but also that  $\rho_1$  is repelled by  $\rho_2$ , and that  $\rho_2$  is repelled by  $\rho_1$ . Let us denote  $\varepsilon_i$  the parameter

of self-interaction and  $\varepsilon_o$  the parameter of interaction with the other population. We obtain:

$$\begin{cases} \partial_t \rho_1 + \text{Div} \left( \rho_1 v_1(\rho_1) \left( \vec{v}_1(x) - \varepsilon_i \frac{\nabla \rho_1 * \eta_1}{\sqrt{1 + \|\nabla \rho_1 * \eta_1\|^2}} - \varepsilon_o \frac{\nabla \rho_2 * \eta_2}{\sqrt{1 + \|\nabla \rho_2 * \eta_2\|^2}} \right) \right) = 0, \\ \partial_t \rho_2 + \text{Div} \left( \rho_2 v_2(\rho_2) \left( \vec{v}_2(x) - \varepsilon_o \frac{\nabla \rho_1 * \eta_1}{\sqrt{1 + \|\nabla \rho_1 * \eta_1\|^2}} - \varepsilon_i \frac{\nabla \rho_2 * \eta_2}{\sqrt{1 + \|\nabla \rho_2 * \eta_2\|^2}} \right) \right) = 0. \end{cases} \quad (12)$$

*Remark 2.7.* Note that the interaction between the equations is only in the nonlocal term.

We obtain again existence and uniqueness of weak entropy solutions thanks to Kružkov theory (see [6, Theorem 3.2]). The obtained theorem is similar to Theorem 2.4 so we don't rewrite it.

A classical situation considered in the engineering literature is that of two groups of people moving in opposite directions and crossing each other. The numerical integration (see Figure 5), shows formation of lanes that are not superimposing as described in the engineering literature ([10, 14] or [1]).

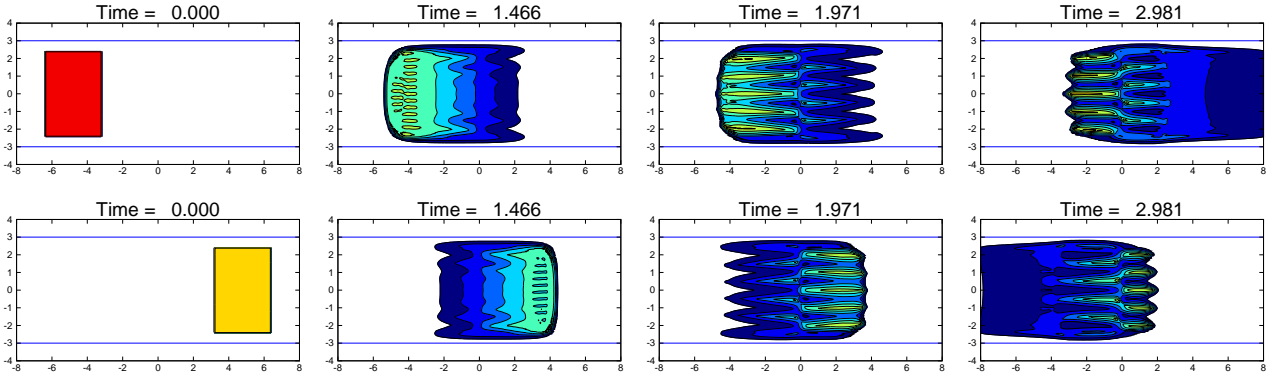


FIGURE 5. Numerical integration of (12). Above, the population  $\rho_1$  moving to the right and, below,  $\rho_2$  moving to the left. Note the lanes that are formed. First, due to the self-interaction ( $\varepsilon_i = 0.3$ ) within each populations and then due to the crossing between the two populations ( $\varepsilon_o = 0.7$ ). The latter lanes of different populations do not superimpose. Picture from [6].

Another situation developing interesting features is the following: two populations are initially uniformly distributed in the same region. At time  $t = 0$ , the first populations starts moving towards an exit (first line of Figure 6), on the right while the second moves only to let the first one pass (second line of Figure 6).

### 2.2.3. Interaction group / isolated agent

Let us finally introduce a model that would take into account the situation in which an isolated individual interact with a crowd. We think for example to the situation in which a predator is running after a group of preys. We can also think to the case of a leader willing to carry a group of followers to a given region. Let  $\rho \in \mathbb{R}_+$  be the density of the group and  $p \in \mathbb{R}^k$  be the position of an isolated agent (*e.g.* a leader or a predator). We describe the interaction by the coupling (see [7]):

$$\begin{cases} \partial_t \rho + \text{Div} \left( \rho V(t, x, \rho, p(t)) \right) = 0, \\ \dot{p} = \varphi \left( t, p, (A\rho(t))(p(t)) \right), \end{cases} \quad (t, x) \in \mathbb{R}^+ \times \mathbb{R}^N, \quad (13)$$

with initial conditions

$$\rho(0, x) = \rho_0(x), \quad p(0) = p_0.$$

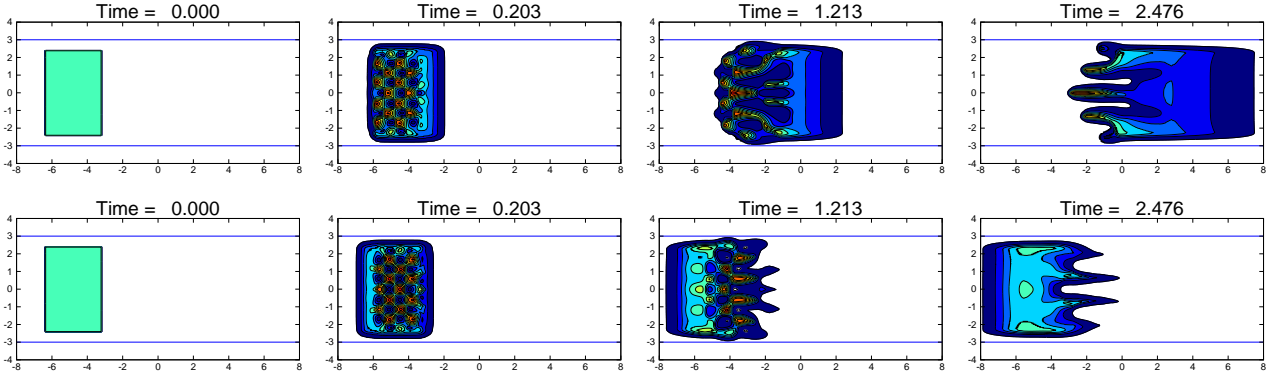


FIGURE 6. Numerical integration of (12) when with  $\varepsilon_i = 0$ ,  $\varepsilon_o = 0.3$ . Above, the population  $\rho_1$  and, below,  $\rho_2$ . Note first the formation of small clusters separating the two populations, then lanes and, finally, a sort of fingering. Picture from [6].

Using once again Kruřkov theory and tools on the stability of ordinary differential equations, in collaboration with R. M. Colombo, we proved existence and uniqueness of solutions (see [7, Theorem 2.2]).

For example, we can consider:

- Followers / Leader (see Figure 7): here the vector  $p \in \mathbb{R}^2$  is the position of the leader and  $\rho$  is the density of the group of followers. The function  $v(\rho)$  describes essentially the speed of the followers and is, as usual, a decreasing function, vanishing in  $\rho = 1$ ; the direction of a follower located in  $x$  is given by the vector  $p(t) - x$ , directed toward the leader. The velocity of the leader is increasing with respect to the averaged density  $\rho * \eta$ , computed in the position of the leader. Indeed, we expect the leader to wait for the followers to join him when the density of followers is small around him, and to accelerate when the density of followers becomes bigger; this means low speed when the averaged density is small and high speed when the averaged density is maximal. The direction of the leader is a chosen vector field  $\vec{\psi}(t)$ .

$$\begin{cases} \partial_t \rho + \text{Div} \left( \rho v(\rho) (p(t) - x) e^{-\|p-x\|} \right) = 0, \\ \dot{p} = (1 + \rho * \eta(p(t))) \vec{\psi}(t). \end{cases}$$

- Sheeps / Dogs: in this example, there are  $n$  dogs, located in  $p_i(t) \in \mathbb{R}^2$  for  $i \in \{1, \dots, n\}$  and a group of sheeps of density  $\rho(t, x)$ . The dogs want to constrain the sheeps to a given area by running around them and the sheeps are afraid by the dogs. As above, the speed of the sheeps is given by the decreasing function  $v(\rho)$  that vanishes in  $\rho = 1$ . The direction of a sheep located in  $x$  is a sum of two terms. The first one is their preferred direction  $\vec{v}(x)$ ; the second one is given by the vector  $\sum_{i=1}^n (x - p_i(t)) e^{-\|p_i-x\|}$  representing the repulsive effects of the dogs on the sheeps, and its presence is less felt if it is too far away. Each dog run around the flock tacking the direction perpendicular to the direction of maximal averaged density.

$$\begin{cases} \partial_t \rho + \text{Div} \left( \rho v(\rho) \left( \vec{v}(x) + \sum_{i=1}^n (x - p_i) e^{-\|p_i-x\|} \right) \right) = 0, \\ \dot{p}_i = \frac{(\rho * \nabla \eta)^\perp(p_i(t))}{\sqrt{1 + \|\rho * \nabla \eta(p_i(t))\|^2}}, \quad \text{for all } i \in \{1, \dots, n\}. \end{cases}$$

- Preys / Predator: here a predator, located in  $p(t) \in \mathbb{R}^3$  is pursuing a group of preys of density  $\rho(t, x)$ . For example, we can think to an hawk pursuing a swarm of little birds or to a shark pursuing a shoal of little fishes. As above, the speed of the preys is given by the decreasing function  $v(\rho)$  that vanishes

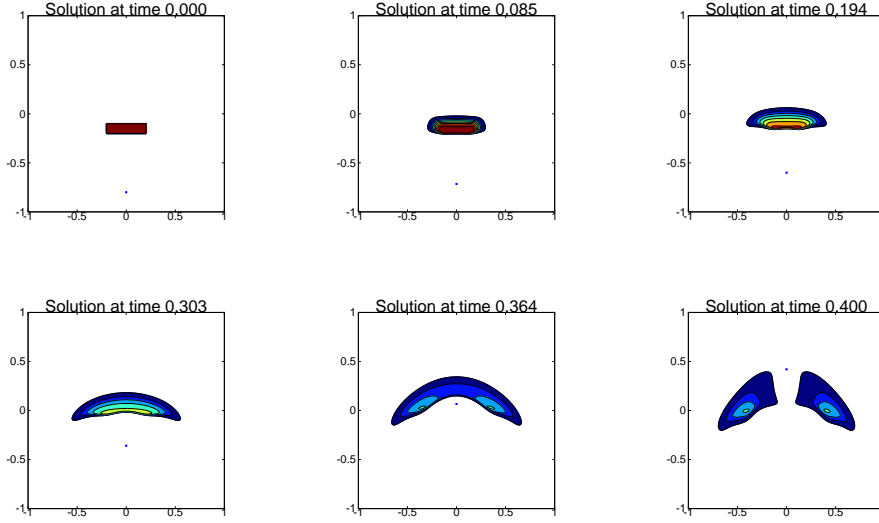


FIGURE 7. Numerical solution of (13) in a predator/prey interaction. Picture from [7].

in  $\rho = 1$ . The direction of a prey located in  $x$  is given by the vector  $(x - p(t))e^{-\|p(t)-x\|}$  so that the predator has a repulsive effect on the preys, and its presence is less felt if it is too far away. The acceleration of the predator is directed toward the maximal averaged density of preys, as felt from its position, so it is directed as  $\nabla(\rho * \eta)(p(t))$ .

$$\begin{cases} \partial_t \rho + \text{Div} \left( \rho v(\rho) \left( 1 + e^{-\|x-p(t)\|} (x - p(t)) \right) \right) = 0, \\ \frac{d^2 p}{dt^2} = (\rho * \nabla) \eta(p(t)). \end{cases}$$

Note that Theorem 2.6 deals with measure solutions. Consequently, if  $\rho_1 \in \mathbf{L}^1$  and  $\rho_2 = \delta_{p(t)}$ , we recover the above coupling PDE/ODE. However, in Theorem 2.6, there are restrictions on the flow as we only deal with continuity equations. In particular, with a well-chosen nonlinearity with respect to  $\rho$  in the first equation of (13), we are able to provide for (13) an a priori uniform bound on the  $\mathbf{L}^\infty$  norm, which is not possible for (10): in the three examples above, if  $v(1) = 0$ , then  $0 \leq \rho_0 \leq 1$  implies  $0 \leq \rho(t) \leq 1$  for all  $t \geq 0$ .

### 3. USING KRUŽKOV THEORY

#### 3.1. General Theory on scalar conservation laws

In this section, we consider classical *scalar* conservation laws.

$$\partial_t u + \text{Div} f(t, x, u) = F(t, x, u), \quad u(0, x) = u_0(x), \quad (14)$$

where  $f$  is the flow and  $F$  is the source. Note that,  $\text{Div}$  stands for the total divergence whereas  $\text{div}$  stands for the partial divergence. Thus  $\text{Div} f(t, x, u(t, x)) = \text{div} f(t, x, u(t, x)) + \partial_u f(t, x, u(t, x)) \cdot \nabla u(t, x)$ .

Let us recall the definition of weak entropy solution:

**Definition 3.1.** The function  $\rho \in \mathbf{L}^\infty([0, T] \times \mathbb{R}^N, \mathbb{R})$  is called *weak entropy solution* to the Cauchy problem (14) if it satisfies for all  $k \in \mathbb{R}$  and any test-function  $\varphi \in \mathcal{C}_c^0([-\infty, T] \times \mathbb{R}^N, \mathbb{R}_+)$ ,

$$\int_{\mathbb{R}_+^*} \int_{\mathbb{R}^N} \left[ (u - k) \partial_t \varphi + (f(t, x, u) - f(t, x, k)) \nabla_x \varphi + (F(t, x, u) - \operatorname{div} f(t, x, k)) \varphi \right] \operatorname{sign}(u - k) \, dx \, dt + \int_{\mathbb{R}^N} |\rho_0(x) - k| \varphi(0, x) \, dx \geq 0. \quad (15)$$

We also recall the well-known Kruřkov theorem [17, Theorem 4], giving existence and uniqueness of weak entropy solutions.

**Theorem 3.2** (Kruřkov). *Let  $u_0 \in (\mathbf{L}^\infty \cap \mathbf{L}^1)(\mathbb{R}^N, \mathbb{R})$ . For all  $A, T \geq 0$ , we denote  $\Omega_T^A = [0, T] \times \mathbb{R}^N \times [-A, A]$  and  $\Omega = \mathbb{R}_+ \times \mathbb{R}^N \times \mathbb{R}$ . Under the conditions  $f \in \mathcal{C}^0(\Omega; \mathbb{R}^N)$ ,  $F \in \mathcal{C}^0(\Omega; \mathbb{R})$  and*

$$(\mathbf{K}) \quad \begin{cases} f \in \mathcal{C}^0(\Omega; \mathbb{R}^N), & F \in \mathcal{C}^0(\Omega; \mathbb{R}), \text{ and for all } T, A > 0 : \\ f, F \text{ have continuous derivatives: } \partial_u f, \partial_u \nabla f, \nabla^2 f, \partial_u F, \nabla F, \\ \text{for all } T, A > 0, \partial_u f \in \mathbf{L}^\infty(\Omega_T^A), & F - \operatorname{div} f \in \mathbf{L}^\infty(\Omega_T^A), \quad \partial_u(F - \operatorname{div} f) \in \mathbf{L}^\infty(\Omega_T^A) \end{cases}$$

there exists a unique weak entropy solution  $u \in \mathbf{L}^\infty([0, T]; \mathbf{L}^1(\mathbb{R}^N; \mathbb{R}))$  of (14) that is right-continuous in time.

Let  $v_0 \in (\mathbf{L}^1 \cap \mathbf{L}^\infty)(\mathbb{R}^N; \mathbb{R})$ . Let  $u$  be the solution associated to the initial condition  $u_0$  and  $v$  be the solution associated to the initial condition  $v_0$ . Let  $M$  be such that  $M \geq \sup(\|u\|_{\mathbf{L}^\infty(\mathbb{R}_+ \times \mathbb{R}^N; \mathbb{R})}, \|v\|_{\mathbf{L}^\infty([0, T] \times \mathbb{R}^N; \mathbb{R})})$ . Then, for all  $t \in [0, T]$ , with  $\gamma = \|\partial_u F\|_{\mathbf{L}^\infty(\Omega_T^M)}$ , we have

$$\|(u - v)(t)\|_{\mathbf{L}^1} \leq e^{\gamma t} \|u_0 - v_0\|_{\mathbf{L}^1}. \quad (16)$$

### 3.1.1. Estimate on the dependence with respect to flow and source

Let us now consider a pair of different flows  $f, g \in \mathcal{C}^2([0, T] \times \mathbb{R}^N \times \mathbb{R}; \mathbb{R}^N)$  and different sources  $F, G \in \mathcal{C}^1([0, T] \times \mathbb{R}^N \times \mathbb{R}; \mathbb{R})$ , let us denote  $u, v$  the solutions of

$$\partial_t u + \operatorname{Div} f(t, x, u) = F(t, x, u), \quad u(0, \cdot) = u_0, \quad (17)$$

$$\partial_t v + \operatorname{Div} g(t, x, v) = G(t, x, v), \quad v(0, \cdot) = v_0, \quad (18)$$

with initial conditions  $u_0, v_0 \in (\mathbf{L}^1 \cap \mathbf{L}^\infty \cap \mathbf{BV})(\mathbb{R}^N, \mathbb{R})$ . We want here to estimate  $\|(u - v)(t)\|_{\mathbf{L}^1}$  with  $f - g, F - G, u_0 - v_0$ . To do that, we use the doubling variable method due to Kruřkov [17]. This strategy was already employed by Lucier [19] and Bouchut & Perthame [3] to study the case in which the flows  $f, g$  depend only on  $u$  and the source are identically zero ( $F = G = 0$ ). A key ingredient in the previous results is that the solution of  $\partial_t u + \operatorname{Div}(f(u)) = 0$  with initial condition  $u_0 \in (\mathbf{L}^\infty \cap \mathbf{L}^1 \cap \mathbf{BV})(\mathbb{R}^N, \mathbb{R})$  satisfies  $\operatorname{TV}(u(t)) \leq \operatorname{TV}(u_0)$ .

Let us remind the definition of total variation.

**Definition 3.3.** For  $u \in \mathbf{L}_{\text{loc}}^1(\mathbb{R}^N; \mathbb{R})$  we denote the total variation of  $u$ :

$$\operatorname{TV}(u) = \sup \left\{ \int_{\mathbb{R}^N} u \operatorname{div} \Psi; \quad \Psi \in \mathcal{C}_c^1(\mathbb{R}^N; \mathbb{R}^N), \quad \|\Psi\|_{\mathbf{L}^\infty} \leq 1 \right\}.$$

The space of function with bounded variation is then defined as

$$\mathbf{BV}(\mathbb{R}^N; \mathbb{R}) = \left\{ u \in \mathbf{L}_{\text{loc}}^1; \operatorname{TV}(u) < \infty \right\}.$$

*Remark 3.4.* If  $u \in (\mathcal{C}^1 \cap \mathbf{W}^{1,1})(\mathbb{R}^N, \mathbb{R})$  then  $\operatorname{TV}(u) = \|\nabla u\|_{\mathbf{L}^1}$ . When  $f$  and  $F$  are not depending on  $u$ , we have

$$u_0 \in (\mathbf{L}^\infty \cap \mathbf{BV})(\mathbb{R}^N, \mathbb{R}) \Rightarrow \forall t \geq 0, \quad u(t) \in (\mathbf{L}^\infty \cap \mathbf{BV})(\mathbb{R}^N, \mathbb{R})$$

and, with  $\gamma = \|\partial_u F\|_{\mathbf{L}^\infty(\Omega_T^M)}$ ,

$$\mathrm{TV}(u(t)) \leq \mathrm{TV}(u_0)e^{\gamma t}.$$

**Theorem 3.5** (see [19]). *Let  $f, g : \mathbb{R} \rightarrow \mathbb{R}^N$  be globally Lipschitz, let  $u_0, v_0 \in (\mathbf{L}^1 \cap \mathbf{L}^\infty)(\mathbb{R}^N; \mathbb{R})$  be initial conditions of*

$$\partial_t u + \mathrm{Div} f(u) = 0, \quad \partial_t v + \mathrm{Div} g(v) = 0.$$

*Assume furthermore that  $v_0 \in \mathbf{BV}(\mathbb{R}^N; \mathbb{R})$ . Then for all  $t \geq 0$ ,*

$$\|(u - v)(t)\|_{\mathbf{L}^1} \leq \|u_0 - v_0\|_{\mathbf{L}^1} + C t \mathrm{TV}(v_0) \mathbf{Lip}(f - g),$$

where  $C > 0$  is a given constant.

We want to generalize this theorem. Let us introduce the set of hypotheses:

$$(\mathbf{FS}) \left\{ \begin{array}{l} \text{for all } U, T > 0, \quad \partial_u F \in \mathbf{L}^\infty(\Omega_T^U) \\ \int_0^T \int_{\mathbb{R}^N} \|(F - \mathrm{div} f)(t, x, \cdot)\|_{\mathbf{L}^\infty([-U, U]; \mathbb{R})} dx dt < +\infty. \end{array} \right.$$

Denoting  $\Omega_T^V = [0, T] \times \mathbb{R}^N \times [-V, V]$ , we obtain:

**Theorem 3.6** (see [18]). *Assume that  $(f, F), (g, G)$  satisfy  $(\mathbf{K})$ , that  $(f - g, F - G)$  satisfies  $(\mathbf{FS})$ . Let  $u_0, v_0 \in (\mathbf{L}^1 \cap \mathbf{L}^\infty \cap \mathbf{BV})(\mathbb{R}^N; \mathbb{R})$ . Let  $u$  and  $v$  be the solutions of (17) and (18) associated to  $(f, F)$  and  $(g, G)$  with initial conditions  $u_0$  and  $v_0$ . Assume furthermore that  $\mathrm{TV}(u(t)) < \infty$  for all  $t \geq 0$ .*

*Let  $V = \max(\|u\|_{\mathbf{L}^\infty}, \|v\|_{\mathbf{L}^\infty})$  and  $\kappa = \|\partial_u F\|_{\mathbf{L}^\infty(\Omega_T^V)}$ . Then for all  $t \in [0, T]$ :*

$$\begin{aligned} \|(u - v)(t)\|_{\mathbf{L}^1} &\leq e^{\kappa t} \|u_0 - v_0\|_{\mathbf{L}^1} + e^{\kappa t} \sup_{\tau \in [0, t]} (\mathrm{TV}(u(\tau))) \int_0^t \|\partial_u(f - g)(\tau)\|_{\mathbf{L}^\infty(\mathbb{R}^N \times [-V, V])} d\tau \\ &+ \int_0^t e^{\kappa(t-\tau)} \int_{\mathbb{R}^N} \|((F - G) - \mathrm{div}(f - g))(\tau, x, \cdot)\|_{\mathbf{L}^\infty([-V, V])} dx d\tau. \end{aligned}$$

The proof of this theorem is based on the Kruřkov doubling variables method and is detailed in [18].

In some particular cases, we recover known estimates:

- $f(u), g(u), F = G = 0 : \kappa = 0$  and

$$\|(u - v)(t)\|_{\mathbf{L}^1} \leq \|u_0 - v_0\|_{\mathbf{L}^1} + t \mathrm{TV}(u_0) \|\partial_u(f - g)\|_{\mathbf{L}^\infty(\Omega_T^V)}.$$

- $f(t, x), F(t, x) : \kappa = 0, u(t, x) = u_0(x) + \int_0^t (F - \mathrm{div} f)(\tau, x) d\tau$ , and

$$\|(u - v)(t)\|_{\mathbf{L}^1} \leq \|u_0 - v_0\|_{\mathbf{L}^1} + \int_0^t \int_{\mathbb{R}^N} |(F - G) - \mathrm{div}(f - g))(\tau, x)| dx d\tau.$$

### 3.1.2. Total variation estimate

To complete Theorem 3.6, we need an estimate on the total variation, defined in Definition 3.3. To do so we need a few more hypotheses. Indeed, there is no reason why the total variation should be bounded for all time. In fact, let us consider the equation  $\partial_t u + \partial_x \cos x = 0, u_0 = 0$ . The solution of this Cauchy problem is  $u(t, x) = t \sin x$  whose total variation is 0 at time 0 and  $+\infty$  for any time  $t > 0$ .

Our goal now is to give a general estimate on the total variation. Let us introduce the following set of hypotheses

$$(\mathbf{TV}) : \begin{cases} \text{for all } A, T > 0 \\ \nabla \partial_u f \in \mathbf{L}^\infty(\Omega_T^A; \mathbb{R}^{N \times N}), \quad \partial_u F \in \mathbf{L}^\infty(\Omega_T^A; \mathbb{R}), \\ \int_0^T \int_{\mathbb{R}^N} \|\nabla(F - \operatorname{div} f)(t, x, \cdot)\|_{\mathbf{L}^\infty([-A, A]; \mathbb{R}^N)} < \infty. \end{cases}$$

We obtain

**Theorem 3.7.** *Let us assume  $(f, F)$  satisfies  $(\mathbf{K})$ - $(\mathbf{TV})$ . Denote  $W_N = \int_0^{\pi/2} (\cos \theta)^N d\theta$ ,  $M = \|u\|_{\mathbf{L}^\infty([0, T] \times \mathbb{R}^N)}$ , and*

$$\kappa_0 = (2N + 1) \|\nabla \partial_u f\|_{\mathbf{L}^\infty(\Omega_T^M)} + \|\partial_u F\|_{\mathbf{L}^\infty(\Omega_T^M)}.$$

*Then, the weak entropy solution  $u$  of (14) satisfies  $u(t) \in \mathbf{BV}(\mathbb{R}^N; \mathbb{R})$  for all  $t > 0$ , and*

$$\operatorname{TV}(u(T)) \leq \operatorname{TV}(u_0) e^{\kappa_0 T} + N W_N \int_0^T e^{\kappa_0(T-t)} \int_{\mathbb{R}^N} \|\nabla(F - \operatorname{div} f)(t, x, \cdot)\|_{\mathbf{L}^\infty([-U_t, U_t]; \mathbb{R}^N)} dx dt,$$

where  $U_t = \sup_{y \in \mathbb{R}^N} |u(t, y)|$ .

The proof of this theorem is based on a good representation formula for the total variation and on the doubling variable method and is detailed in [18].

*Remark 3.8.* In some cases, we recover known estimates.

- When  $f$  depends only on  $u$  and  $F = 0$ , we have a result similar to the one that was already known:  $\operatorname{TV}(u(t)) \leq \operatorname{TV}(u_0)$ .
- When  $f$  and  $F$  do not depend on  $u$ , the equation reduces in fact to the ODE  $\partial_t u = (F - \operatorname{div} f)(t, x)$ , whose solution writes

$$u(t, x) = u_0(x) + \int_0^t (F - \operatorname{div} f)(\tau, x) d\tau.$$

Meanwhile, the bound above reduces to

$$\operatorname{TV}(u(t)) \leq \operatorname{TV}(u_0) + N W_N \int_0^t \int_{\mathbb{R}^N} |(F - \operatorname{div} f)(\tau, x)| d\tau$$

which is essentially what we expected, up to the coefficient  $N W_N$ .

**Proof.** Let us admit the following proposition:

**Proposition 3.9.** *Let  $\mu \in \mathcal{C}_c^\infty(\mathbb{R}_+; \mathbb{R}_+)$  such that  $\|\mu\|_{\mathbf{L}^1} = 1$  and  $\mu' < 0$  on  $\mathbb{R}_+^*$ . Let  $u \in \mathbf{L}_{\text{loc}}^1(\mathbb{R}^N, \mathbb{R})$ . We define  $\mu_\lambda(x) = \frac{1}{\lambda^N} \mu\left(\frac{\|x\|}{\lambda}\right)$ . If there exists  $C_0 > 0$  such that  $\forall \lambda > 0$ ,*

$$\mathcal{I}(\lambda) = \frac{1}{\lambda} \int_{\mathbb{R}^N} \int_{\mathbb{R}^N} |u(x+y) - u(x)| \mu_\lambda(y) dx dy \leq C_0,$$

then  $u \in \mathbf{BV}(\mathbb{R}^N, \mathbb{R})$  and

$$C_1 \operatorname{TV}(u) = \lim_{\lambda \rightarrow 0} \mathcal{I}(\lambda) \leq C_0.$$

with  $C_1 = \int_{\mathbb{R}^N} |y_1| \mu(\|y\|) dy$ .

Hence, we introduce:

$$\mathcal{F}(T, \lambda) = \int_0^T \int_{\mathbb{R}^N} \int_{B(x_0, R+M(T_0-t))} |u(x+y) - u(x)| \mu_\lambda(y) dx dy dt,$$

our goal being to estimate this quantity using the Kružkov doubling variable method.

**Doubling variable method.** Let us denote  $u = u(t, x)$  and  $v = u(s, y)$  for  $(t, x), (s, y) \in \mathbb{R}_+^* \times \mathbb{R}^N$ . For all  $k, l \in \mathbb{R}$  and all test-function  $\varphi = \varphi(t, x, s, y) \in \mathcal{C}_c^1((\mathbb{R}_+^* \times \mathbb{R}^N)^2; \mathbb{R}_+)$ , we have, by definition of weak entropy solution (see Definition 3.1)

$$\int_{\mathbb{R}_+^*} \int_{\mathbb{R}^N} \left[ (u - k) \partial_t \varphi + (f(t, x, u) - f(t, x, k)) \nabla_x \varphi + (F(t, x, u) - \operatorname{div} f(t, x, k)) \varphi \right] \operatorname{sign}(u - k) dx dt \geq 0 \quad (19)$$

and

$$\int_{\mathbb{R}_+^*} \int_{\mathbb{R}^N} \left[ (v - l) \partial_s \varphi + (f(s, y, v) - f(s, y, l)) \nabla_y \varphi + (F(s, y, v) - \operatorname{div} f(s, y, l)) \varphi \right] \operatorname{sign}(v - l) dy ds \geq 0. \quad (20)$$

Let us choose  $k = v(s, y)$  in (19) and integrate in  $(s, y)$ . Similarly, we choose  $l = u(t, x)$  in (20) and we integrate in  $(t, x)$ . Furthermore, we choose  $\varphi(t, x, s, y) = \Psi(t - s, x - y) \Phi(t, x)$  and we summate to get

$$\begin{aligned} & \int_{\mathbb{R}_+^*} \int_{\mathbb{R}^N} \int_{\mathbb{R}_+^*} \int_{\mathbb{R}^N} \operatorname{sign}(u - v) \left[ (u - v) \Psi \partial_t \Phi + (f(t, x, u) - f(t, x, v)) \cdot (\nabla \Phi) \Psi \right. \\ & \quad \left. + (f(s, y, v) - f(s, y, u) - f(t, x, v) + f(t, x, u)) \cdot (\nabla \Psi) \Phi \right. \\ & \quad \left. + (F(t, x, u) - F(s, y, v) + \operatorname{div} f(s, y, u) - \operatorname{div} f(t, x, v)) \varphi \right] dx dt dy ds \geq 0. \end{aligned} \quad (21)$$

We choose now  $\mu$  and  $\nu$  unit approximations and

$$\Psi(t - s, x - y) = \frac{1}{\lambda^N} \mu \left( \frac{x - y}{\lambda} \right) \frac{1}{\eta} \nu \left( \frac{t - s}{\eta} \right),$$

so that  $\Psi$  converges to a Dirac in space and time when  $\lambda, \eta \rightarrow 0$ ; and we choose  $\Phi$  such that  $\Phi \rightarrow \mathbf{1}_{[0, T] \times B(x_0, R+M(T-t))}$  when  $\theta, \varepsilon \rightarrow 0$ . The last step consists in estimating the integral (21) when  $\eta, \theta, \varepsilon \rightarrow 0$ , keeping the  $\lambda$  fixed to make appear  $\mathcal{F}$ .

**Estimate on  $\mathcal{F}$ .** By the doubling variable method, we obtain

$$\partial_T \mathcal{F}(T, \lambda) \leq \partial_T \mathcal{F}(0, \lambda) + C \lambda \left( \partial_\lambda \mathcal{F}(T, \lambda) + \frac{N}{\lambda} \mathcal{F}(T, \lambda) \right) + C' \mathcal{F}(T, \lambda) + \lambda \int_0^T A(t) dt, \quad (22)$$

where

$$\begin{aligned} A(t) &= M_1 \int_{\mathbb{R}^N} \|\nabla(F - \operatorname{div} f)(t, x, \cdot)\|_{\mathbf{L}^\infty(u)} dx, & M_1 &= \int_{\mathbb{R}^N} \|y\| \mu(\|y\|) dy, \\ C' &= N \|\nabla \partial_u f\|_{\mathbf{L}^\infty} + \|\partial_u F\|_{\mathbf{L}^\infty}. & C &= \|\nabla \partial_u f\|_{\mathbf{L}^\infty}. \end{aligned}$$

We use the hypothesis  $u_0 \in \mathbf{BV}(\mathbb{R}^N, \mathbb{R})$  to get  $\frac{1}{\lambda} \partial_T \mathcal{F}(0, \lambda) \leq M_1 \operatorname{TV}(u_0)$ , and we integrate with respect to time, obtaining:

$$0 \leq \frac{M_1}{C} \operatorname{TV}(u_0) + \partial_\lambda \mathcal{F}(T, \lambda) + \frac{\alpha(T)}{\lambda} \mathcal{F}(T, \lambda) + \frac{1}{C} \int_0^T A(t) dt,$$

where

$$\alpha(T) = N + \frac{C'}{C} - \frac{1}{CT} \xrightarrow{T \rightarrow 0} -\infty.$$

Next, we choose  $T$  so that  $\alpha < -1$  and we integrate on  $[\lambda, +\infty[$ . We obtain:

$$\mathcal{F}(T, \lambda) \leq \frac{\lambda}{-\alpha - 1} \frac{M_1}{C} \text{TV}(u_0) + \frac{\lambda}{C(-\alpha - 1)} \int_0^T A(t) dt.$$

Besides, note that, thanks to the shape of  $\mu$ , we can find  $K > 0$  so that

$$\partial_\lambda \mathcal{F}(T, \lambda) + \frac{N}{\lambda} \mathcal{F} = \int_0^T \int_{\mathbb{R}^N} \int_{B(x_0, R+M(T_0-t))} |u(x+y) - u(x)| \mu'_\lambda(y) dx dy dt \leq \frac{K}{2\lambda} \mathcal{F}(T, 2\lambda).$$

Hence, we finally obtain

$$\frac{1}{\lambda} \partial_T \mathcal{F}(T, \lambda) \leq \frac{1}{\lambda} \partial_T \mathcal{F}(0, \lambda) + \frac{CK + C'}{(-\alpha - 1)C} \left( M_1 \text{TV}(u_0) + \int_0^T A(t) dt \right) + \int_0^T A(t) dt.$$

By Proposition 3.9 we have then  $u(t) \in \mathbf{BV}(\mathbb{R}^N, \mathbb{R})$ . We can now divide (22) by  $\lambda$  and make  $\lambda \rightarrow 0$ . Applying a standard Gronwall-type argument, we obtain the desired inequality.  $\square$

### 3.2. Scalar conservation law with a non-local flow

Let us consider equation (5) with initial condition  $\rho_0 \in (\mathbf{L}^1 \cap \mathbf{L}^\infty \cap \mathbf{BV})(\mathbb{R}^N, \mathbb{R})$ . We want to prove Theorem 2.1 and Theorem 2.3. Note that this proof adapt smoothly to prove Theorem 2.4 and 2.5. We use here the scheme proposed in Section 1, choosing  $X = \mathcal{C}^0([0, T], \mathbf{L}^1(\mathbb{R}^N, \mathbb{R}))$  at point **(a)**. Point **(b)** is then satisfied by Kruřkov theorem (see Theorem 3.2) and point **(c)** is satisfied by the stability estimate given by Theorem 3.6 & 3.7.

This scheme of proof can be also used for the other models: the proof of Theorem 2.4 for an orderly crowd is based on it, as well as Theorem 2.5 giving existence and uniqueness for the several populations models (10) and (12). For more details on these various theorems, refer to [4, 6].

We use also this scheme of proof in order to prove existence and uniqueness of solution to equation (13), where we need furthermore stability results on the ODE (see [7]).

#### 3.2.1. Proof of Theorem 2.1

Let us introduce the space

$$X = \mathcal{C}^0([0, T], \mathbf{L}^1(\mathbb{R}^N; \mathbb{R}_+)).$$

Let  $r \in X$  and  $\rho \in X$  be the solution of (3) given by Kruřkov Theorem (see Theorem 3.2). Note that,  $u = 0$  being a solution to (3),  $\rho_0 \geq 0$  implies  $\rho(t) \geq 0$  for all  $t \geq 0$  thanks to the maximal principle on scalar conservation laws [17, Theorem 3].

*Remark 3.10.* For the model (8) of orderly crowd, we can use the same kind of argument to have a uniform bound on the  $\mathbf{L}^\infty$  norm. Indeed, if  $u = 1$  is a solution to the equation

$$\partial_t \rho + \text{Div}(\rho v(\rho) \vec{w}(x)) = 0 \tag{23}$$

then  $\rho_0 \leq 1$  implies  $\rho(t) \leq 1$  for all  $t \geq 0$ . This fact allows us in this case to consider the space  $X = \mathcal{C}^0([0, T], \mathbf{L}^1(\mathbb{R}^N, [0, 1]))$ . The same fact is also true for each density of the model (12) of orderly crowd with several populations. Indeed, the interaction between the equations is only in the non-local term; so, if we fix

the nonlocal term, we have to deal with the same kind of scalar conservation law as (23). In particular, for each density  $\rho_i$  the maximum principle gives us

$$0 \leq \rho_{0,i} \leq 1 \quad \Rightarrow \quad 0 \leq \rho_i(t) \leq 1 \quad \text{for all } t \geq 0.$$

So finally, if there are  $k$  populations, we have the following uniform bound on the total density density

$$0 \leq \sum_{i=1}^k \rho_i(t) \leq k.$$

Let us introduce the application

$$\mathcal{Q} : r \in X \rightarrow \rho \in X.$$

For  $r_1, r_2$ , we get by Theorem 3.6 and Theorem 3.7,

$$\|\mathcal{Q}(r_1) - \mathcal{Q}(r_2)\|_{\mathbf{L}^\infty([0,T], \mathbf{L}^1)} \leq f(T) \|r_1 - r_2\|_{\mathbf{L}^\infty([0,T], \mathbf{L}^1)},$$

where  $f$  is continuous, increasing,  $f(0) = 0$  and  $f \rightarrow_{T \rightarrow \infty} \infty$ . Consequently, we can choose  $T$  small enough so that  $f(T) = 1/2$  and apply the Banach fixed point theorem for a small time. Iterating the process in time, we obtain global in time existence.

### 3.2.2. Gâteaux derivative of the semi-group

We prove now that the semi-group obtained in Theorem 2.1 (or 2.5) is Gâteaux-differentiable with respect to the initial condition. The following result is obtained by the use of Kružkov theory.

Note that the Gâteaux-differentiability is also possible for the more non-linear models of orderly crowd (8) and (12). Indeed an important tool below is that the equation (5) preserves the regularity of the initial condition, which is no longer true for (8).

**Definition 3.11.** We say the application  $S : \mathbf{L}^1(\mathbb{R}^N; \mathbb{R}) \rightarrow \mathbf{L}^1(\mathbb{R}^N; \mathbb{R})$  is *Gâteaux differentiable in  $\mathbf{L}^1$* , in  $\rho_0 \in \mathbf{L}^1$ , in the direction  $r_0 \in \mathbf{L}^1$  if there exists a linear continuous application  $DS(\rho_0) : \mathbf{L}^1 \rightarrow \mathbf{L}^1$  such that

$$\left\| \frac{S(\rho_0 + hr_0) - S(\rho_0)}{h} - DS(\rho_0)(r_0) \right\|_{\mathbf{L}^1} \rightarrow_{h \rightarrow 0} 0.$$

We expect the Gâteaux derivative to be the solution of the linearized problem (7).

First, we prove that the linearized problem admits an entropic solution (see [5, 6]).

**Theorem 3.12.** Assume that  $v \in (\mathcal{C}^4 \cap \mathbf{W}^{2,\infty})(\mathbb{R}, \mathbb{R})$ ,  $\vec{v} \in (\mathcal{C}^3 \cap \mathbf{W}^{2,1} \cap \mathbf{W}^{2,\infty})(\mathbb{R}^N, \mathbb{R}^N)$ ,  $\eta \in (\mathcal{C}^3 \cap \mathbf{W}^{2,\infty})(\mathbb{R}^N, \mathbb{R}_+)$ . Let  $\rho \in \mathcal{C}^0([0, T_{ex}]; \mathbf{W}^{1,\infty} \cap \mathbf{W}^{1,1}(\mathbb{R}^N, \mathbb{R}))$ ,  $r_0 \in (\mathbf{L}^1 \cap \mathbf{L}^\infty)(\mathbb{R}^N; \mathbb{R})$ . Then the linearized problem (7) with initial condition  $r_0$  admits a unique entropic solution  $r \in \mathcal{C}^0([0, T_{ex}]; \mathbf{L}^1(\mathbb{R}^N; \mathbb{R}))$  and we denote  $\Sigma_t^\rho r_0 = r(t, \cdot)$ .

If furthermore  $r_0 \in \mathbf{W}^{1,1}(\mathbb{R}^N, \mathbb{R})$ , then for all  $t \in [0, T_{ex}[$ ,  $r(t) \in \mathbf{W}^{1,1}(\mathbb{R}^N, \mathbb{R})$ .

The proof is similar to the one of Theorem 2.1 so we omit it.

**Theorem 3.13.** Assume that  $v \in (\mathcal{C}^4 \cap \mathbf{W}^{2,\infty})(\mathbb{R}, \mathbb{R})$ ,  $\vec{v} \in (\mathcal{C}^3 \cap \mathbf{W}^{2,1} \cap \mathbf{W}^{2,\infty})(\mathbb{R}^N, \mathbb{R}^N)$ ,  $\eta \in (\mathcal{C}^3 \cap \mathbf{W}^{2,\infty})(\mathbb{R}^N, \mathbb{R}_+)$ . Let  $\rho_0 \in (\mathbf{W}^{1,\infty} \cap \mathbf{W}^{2,1})(\mathbb{R}^N, \mathbb{R}^+)$ ,  $r_0 \in (\mathbf{W}^{1,1} \cap \mathbf{L}^\infty)(\mathbb{R}^N, \mathbb{R})$ .

Then, for every  $t \geq 0$ , the local semigroup of the pedestrian traffic problem is  $\mathbf{L}^1$  Gâteaux differentiable in the direction  $r_0$  and

$$DS_t(\rho_0)(r_0) = \Sigma_t^{S_t \rho_0} r_0.$$

We prove this theorem following the same sketch of proof as above.

**Proof.** Let  $\rho, \rho_h$  the solutions of the problem (5) with initial condition  $\rho_0, \rho_0 + hr_0$ .

Let  $r$  be the solution of the linearized problem (7),  $r(0) = r_0$  and let  $z_h = \rho + hr$  which then satisfies

$$\partial_t z_h + \text{Div} (z_h(v(\rho * \eta) + hv'(\rho * \eta)(r * \eta))\vec{v}(x)) = h^2 \text{Div}(rv'(\rho * \eta)(r * \eta)\vec{v}(x)), \quad z_h(0) = \rho_0 + hr_0.$$

Then we use Theorem 3.6 & 3.7 to compare  $\rho_h$  et  $z_h$ . We get:

$$\begin{aligned} \frac{1}{h} \|\rho_h - z_h\|_{\mathbf{L}^\infty([0, T], \mathbf{L}^1)} &\leq F(T) \left( \frac{1}{h} \|\rho_h - \rho\|_{\mathbf{L}^\infty(\mathbf{L}^1)}^2 + \frac{1}{h} \|\rho_h - z_h\|_{\mathbf{L}^\infty(\mathbf{L}^1)} \right) \\ &\quad + hC(\beta)Te^{C(\beta)T} \|r\|_{\mathbf{L}^\infty(\mathbf{W}^{1,1})} \|r\|_{\mathbf{L}^\infty(\mathbf{L}^1)}, \end{aligned}$$

with  $F$  increasing and  $F(0) = 0$ . Then, we choose  $T$  small enough so that  $F(T) = 1/2$ . Besides, applying Theorem 3.6 to compare  $\rho$  and  $\rho_h$  and using Gronwall lemma, we obtain that  $\frac{1}{h} \|\rho_h - \rho\|_{\mathbf{L}^\infty(\mathbf{L}^1)}$  remains bounded when  $h \rightarrow 0$ .

Finally, we can take the limit  $h \rightarrow 0$  and obtain the desired result.  $\square$

### 3.2.3. Extrema of a cost functional

We are now able to characterize the extrema of a given cost functional. Let  $J$  be a cost functional such that

$$J(\rho_0) = \int_{\mathbb{R}^N} f(S_t \rho_0) \psi(t, x) dx.$$

**Proposition 3.14.** *Let  $f \in \mathcal{C}^{1,1}(\mathbb{R}; \mathbb{R}_+)$  and  $\psi \in \mathbf{L}^\infty(\mathbb{R}^+ \times \mathbb{R}^N; \mathbb{R})$ . Assume  $S: [0, T] \times (\mathbf{L}^1 \cap \mathbf{L}^\infty)(\mathbb{R}^N; \mathbb{R}) \rightarrow (\mathbf{L}^1 \cap \mathbf{L}^\infty)(\mathbb{R}^N; \mathbb{R})$  is  $\mathbf{L}^1$  Gâteaux differentiable.*

*If  $\rho_0 \in (\mathbf{L}^1 \cap \mathbf{L}^\infty)(\mathbb{R}^N; \mathbb{R})$  is solution of the problem:*

$$\text{Find } \min_{\rho_0} J(\rho_0) \text{ such that } \{S_t \rho_0 \text{ is solution of problem (Traffic)}\}.$$

*then, for all  $r_0 \in (\mathbf{L}^1 \cap \mathbf{L}^\infty)(\mathbb{R}^N; \mathbb{R})$*

$$\int_{\mathbb{R}^N} f'(S_t \rho_0) \Sigma_t^{\rho_0} r_0 \psi(t, x) dx = 0.$$

## 4. USING THE OPTIMAL TRANSPORT THEORY

In this section, we want to prove Theorem 2.2, giving existence and uniqueness of weak measure solution to (5) and (10). In a more general settings, we consider the system:

$$\begin{aligned} \partial_t \rho_i + \text{div}(\rho_i V_i(x, \rho_1 * \eta_{i,1}, \dots, \rho_k * \eta_{i,k})) &= 0, & (t, x) \in \mathbb{R}_+ \times \mathbb{R}^N \\ \rho_i(0) &= \bar{\rho}_i, & i \in \{1, \dots, k\}. \end{aligned} \quad (24)$$

in which the coupling between the equations is only present through the nonlocal term. Fixing the nonlocal term, we obtain a system of decoupled continuity equations:

$$\begin{cases} \partial_t \rho_1 + \text{div}(\rho_1 b_1(t, x)) = 0, \\ \dots \\ \partial_t \rho_k + \text{div}(\rho_k b_k(t, x)) = 0, \end{cases}$$

where  $b_1, \dots, b_k$  are regular with respect to  $x$ .

#### 4.1. Existence and uniqueness of weak measure solutions

Let us remind the following definitions of weak measure solution, but also of Lagrangian solution.

**Definition 4.1.**  $\rho \in \mathbf{L}^\infty([0, T], \mathcal{M}^+(\mathbb{R}^N)^k)$  is a measure solution of (24) if,  $\forall \varphi \in \mathcal{C}_c^\infty([-\infty, T] \times \mathbb{R}^N, \mathbb{R})$

$$\int_0^T \int_{\mathbb{R}^N} \left[ \partial_t \varphi + V_i(x, \rho * \eta_i) \cdot \nabla \varphi \right] d\rho_t^i(x) dt + \int_{\mathbb{R}^N} \varphi(0, x) d\bar{\rho}_i(x) = 0.$$

**Definition 4.2.**  $\rho \in \mathbf{L}^\infty([0, T], \mathcal{M}^+(\mathbb{R}^N)^k)$  is a Lagrangian solution with initial condition  $\bar{\rho} \in \mathcal{M}^+(\mathbb{R}^N)^k$  if there exists an ODE flow  $X^i : [0, T] \times \mathbb{R}^N \rightarrow \mathbb{R}^N$ , solution of

$$\begin{cases} \frac{dX^i}{dt}(t, x) = V_i(X^i(t, x), \rho_t * \eta^i(X^i(t, x))), \\ X^i(0, x) = x; \end{cases}$$

and such that  $\rho_t^i = X_{t\#}^i \bar{\rho}^i$  where  $X_t^i : \mathbb{R}^N \rightarrow \mathbb{R}^N$  is the map defined as  $X_t^i(x) = X^i(t, x)$  for any  $(t, x) \in \mathbb{R}_+ \times \mathbb{R}^N$ .

**Definition 4.3.** Let  $\mu$  be measure on  $\Omega$  and  $T : \Omega \rightarrow \Omega'$  a measurable map. Then  $T_{\#}\mu$  is the push-forward of  $\mu$  if for any  $\varphi \in \mathcal{C}_c^0(\Omega')$ ,

$$\int_{\Omega'} \varphi(x) dT_{\#}\mu(x) = \int_{\Omega} \varphi(T(y)) d\mu(y).$$

If  $T_{\#}d\mu(x) = f(x) dx$  and  $d\mu(y) = g(y) dy$ ; and  $T$  is a  $\mathcal{C}^1$ -diffeomorphism. Then we have the *change of variable formula*

$$g(x) = f(T(x)) |\det(\nabla T(x))|.$$

Instead of proving directly Theorem 2.2 (or Theorem 2.6), we prove first the existence and uniqueness of lagrangian solutions.

**Theorem 4.4.** Let  $\bar{\rho} \in \mathcal{M}^+(\mathbb{R}^N, \mathbb{R}^k)$ . Let us assume that  $V \in (\mathbf{L}^\infty \cap \text{Lip})(\mathbb{R}^N \times \mathbb{R}^k, \mathbb{R}^{N \times k})$  and that  $\eta \in (\mathbf{L}^\infty \cap \text{Lip})(\mathbb{R}^N, \mathbb{R}^{k \times k})$ . Then there exists a unique Lagrangian solution to system (24) with initial condition  $\bar{\rho}$ .

*Remark 4.5.* Note that a Lagrangian solution is also a weak measure solution.

Besides, we recover the results of Theorem 2.1, except the continuity in time. Indeed, Lagrangian solutions preserve the regularity of the initial condition along the time, and in particular if  $\bar{\rho} \in \mathbf{L}^1(\mathbb{R}^N, (\mathbb{R}^+)^k)$  then  $\rho \in \mathbf{L}^\infty(\mathbb{R}^+, \mathbf{L}^1(\mathbb{R}^N, (\mathbb{R}^+)^k))$  and we have

$$\|\rho(t)\|_{\mathbf{L}^1} = \|\bar{\rho}\|_{\mathbf{L}^1}.$$

If moreover  $\bar{\rho} \in (\mathbf{L}^1 \cap \mathbf{L}^\infty)(\mathbb{R}^N, (\mathbb{R}^+)^k)$ , then  $\rho(t) \in \mathbf{L}^\infty$  for all  $t \geq 0$  and we have the estimate

$$\|\rho(t)\|_{\mathbf{L}^\infty} \leq \|\bar{\rho}\|_{\mathbf{L}^\infty} e^{Ct},$$

where  $C$  depends on  $\|\bar{\rho}\|_{\mathcal{M}}$ ,  $V$  and  $\eta$ .

We conclude the proof of Theorem 2.2 stating the uniqueness of measure solutions, so that the Lagrangian solution obtained is also the unique measure solutions.

**Proposition 4.6.** Under the same set of hypotheses as Theorem 4.4, the weak measure solutions for (24) are unique.

#### 4.2. Proof of Theorem 4.4

Once again, the proof is based on the scheme described in Section 1. We consider below probability measures instead ; for any  $i$ , we could also consider positive measures of fixed total mass  $\|\bar{\rho}^i\|_{\mathcal{M}}$ .

(a) Let us first introduce a space

$$X = \mathbf{L}^\infty([0, T], \mathcal{P}(\mathbb{R}^N)^k).$$

We equip this space with the distance  $d(\mu, \nu) = \sup_{t \in [0, T]} \mathcal{W}_1(\mu_t, \nu_t)$ . The Wasserstein distance  $\mathcal{W}_1$  is defined as follow:

**Definition 4.7.** Let  $\mu, \nu \in \mathcal{P}(\mathbb{R}^N)$ . Let us denote  $\mathbb{P}_x : \mathbb{R}^d \times \mathbb{R}^d \rightarrow \mathbb{R}^d$  the *projection on the first coordinate*; that is, for any  $(u, v) \in \mathbb{R}^d \times \mathbb{R}^d$ ,  $\mathbb{P}_x(u, v) = u$ . In a similar way,  $\mathbb{P}_y : \mathbb{R}^d \times \mathbb{R}^d \rightarrow \mathbb{R}^d$  is the *projection on the second coordinate*; that is, for any  $(u, v) \in \mathbb{R}^d \times \mathbb{R}^d$ ,  $\mathbb{P}_y(u, v) = v$ . We denote  $\Xi(\mu, \nu)$  the set of *plans*, that is

$$\Xi(\mu, \nu) = \left\{ \gamma \in \mathcal{P}(\mathbb{R}^N \times \mathbb{R}^N) : \mathbb{P}_{x\#}\gamma = \mu \text{ and } \mathbb{P}_{y\#}\gamma = \nu \right\}.$$

The *Wasserstein distance of order one* between  $\mu$  and  $\nu$  is

$$\mathcal{W}_1(\mu, \nu) = \inf_{\gamma \in \Xi(\mu, \nu)} \int_{\mathbb{R}^N \times \mathbb{R}^N} |x - y| d\gamma(x, y).$$

Let  $\rho = (\rho^1, \dots, \rho^k)$ ,  $\sigma = (\sigma^1, \dots, \sigma^k) \in \mathcal{P}(\mathbb{R}^N)^k$ . The *Wasserstein distance of order one* between  $\rho$  and  $\sigma$ , denoted  $\mathcal{W}_1(\rho, \sigma)$ , as

$$\mathcal{W}_1(\rho, \sigma) = \sum_{i=1}^k \mathcal{W}_1(\rho^i, \sigma^i).$$

Let us recall the following duality formula:

**Proposition 4.8** (cf. Villani [23, p. 207]). *Let  $f, g$  be two probability measures. The Wasserstein distance of order one between  $f$  and  $g$  satisfies*

$$\mathcal{W}_1(f, g) = \sup_{\text{Lip}(\varphi) \leq 1} \int_{\mathbb{R}^d} \varphi(x) (df(x) - dg(x)).$$

(b) Existence of Lagrangian solutions.

Let  $r \in \mathbf{L}^\infty([0, T], \mathcal{P}(\mathbb{R}^N)^k)$ .

Define  $b_i(t, x) = V_i(x, r_t * \eta_i) \in \mathbf{L}^\infty([0, T], \mathbf{W}^{1,\infty}(\mathbb{R}^N)^k)$ . Let us consider the equation

$$\partial_t \rho_i + \text{div}(\rho_i b_i(t, x)) = 0. \tag{25}$$

Let  $\rho_i = X_{t\#} \bar{\rho}$  be the Lagrangian solution of (25). Then the application

$$\mathcal{I} : r \in \mathbf{L}^\infty([0, T], \mathcal{P}(\mathbb{R}^N)^k) \mapsto \rho \in \mathbf{L}^\infty([0, T], \mathcal{P}(\mathbb{R}^N)^k).$$

is well-defined.

(c) Stability estimate.

**Proposition 4.9.** *Let  $\bar{\rho}, \bar{\sigma} \in \mathcal{P}(\mathbb{R}^N)$  and  $r, s \in \mathcal{C}^0([0, T], \mathcal{P}(\mathbb{R}^N))$ . Let  $V \in (\mathbf{L}^\infty \cap \text{Lip})(\mathbb{R}^N \times \mathbb{R}^k, \mathbb{R}^N)$ ,  $\eta, \nu \in (\mathbf{L}^\infty \cap \text{Lip})(\mathbb{R}^N, \mathbb{R})$ . If  $\rho$  and  $\sigma$  are Lagrangian solutions of*

$$\begin{aligned} \partial_t \rho + \text{div}(\rho V(x, r * \eta)) &= 0, & \rho(0, \cdot) &= \bar{\rho}, \\ \partial_t \sigma + \text{div}(\sigma V(x, s * \eta)) &= 0, & \sigma(0, \cdot) &= \bar{\sigma}. \end{aligned}$$

We have the estimate:

$$\mathcal{W}_1(\rho_T, \sigma_T) \leq e^{CT} \mathcal{W}_1(\bar{\rho}, \bar{\sigma}) + T e^{CT} C' \sup_{t \in [0, T]} \mathcal{W}_1(r_t, s_t),$$

where  $C = \text{Lip}_x(V) + \text{Lip}_r(V) \text{Lip}(\eta) \|\bar{\rho}\|_{\mathcal{M}} + \text{Lip}_r(V) \text{Lip}(\eta) \|\bar{\rho}\|_{\mathcal{M}}$  and  $C' = \text{Lip}_r(V) \text{Lip}(\eta) \|\bar{\rho}\|_{\mathcal{M}}$ .

**Proof.** Let  $X, Y$  be the ODE flows associated to  $\rho, \sigma$ . Let  $\gamma_0 \in \Xi(\bar{\rho}, \bar{\sigma})$ . Define

$$X_t \bowtie Y_t : (x, y) \mapsto (X(x), Y(y)).$$

Then  $\gamma_t = (X_t \bowtie Y_t)_\# \gamma_0 \in \Xi(\rho_t, \sigma_t)$ . Let us introduce

$$Q(t) = \int_{\mathbb{R}^N \times \mathbb{R}^N} |x - y| d\gamma_t(x, y) = \int_{\mathbb{R}^N \times \mathbb{R}^N} |X_t(x) - Y_t(y)| d\gamma_0(x, y).$$

Then  $Q$  is a Lipschitz function and

$$Q'(t) \leq \int_{\mathbb{R}^N \times \mathbb{R}^N} |V(X_t(x), r_t * \eta(X_t(x))) - V(Y_t(y), s_t * \eta(Y_t(x)))| d\gamma_0(x, y).$$

By triangular inequality, we obtain

$$Q'(t) \leq (\text{Lip}_x(V) + \text{Lip}_r(V) \text{Lip}(r_t * \eta)) Q(t) + \text{Lip}_r(V) \int_{\mathbb{R}^N \times \mathbb{R}^N} |(r_t - s_t) * \eta(Y_t(y))| d\gamma_0(x, y).$$

Note besides that, thanks to Proposition 4.8, we have

$$(r_t^i - s_t^i) * \eta(z) = \int_{\mathbb{R}^N} \eta(z - \zeta) (dr_t^i(\zeta) - ds_t^i(\zeta)) \leq \text{Lip}(\eta) W_1(r_t^i, s_t^i).$$

Integrating, we get

$$Q(t) \leq Q(0) e^{Ct} + t C' e^{Ct} \sup_{\tau} \mathcal{W}_1(r_\tau, s_\tau).$$

where  $C = \text{Lip}_x(V) + \text{Lip}_r(V) \|r_t\|_{\mathcal{M}} \text{Lip}(\eta)$ ,  $C' = \text{Lip}_r(V) \text{Lip}(\eta) \|\bar{\rho}\|_{\mathcal{M}}$ .

We conclude taking  $\gamma_0$  in an optimal way so that  $Q(0) = \mathcal{W}_1(\rho_0, \sigma_0)$  and using the inequality

$$\mathcal{W}_1(\rho_t, \sigma_t) \leq Q(t).$$

□

The stability estimate allows us to apply Banach fixed point Theorem for  $T$  small enough.

### 4.3. Measure solutions are Lagrangian solutions

**Proof of Proposition 4.6.** Let  $\rho$  be a measure solution of (24). Let  $b = V(x, \rho * \eta)$  and denote  $\sigma$  the Lagrangian solution associated to  $\partial_t \sigma + \text{div}(\sigma b) = 0$  with  $\sigma(0) = \bar{\rho}$ .

Then  $\delta = \rho - \sigma$  is a measure solution of  $\partial_t \delta + \text{div}(\delta b) = 0$ , with  $\delta(0) = 0$ . That is to say, for any  $\varphi \in \mathcal{C}_c^\infty([-\infty, T] \times \mathbb{R}^N, \mathbb{R})$ ,

$$\int_0^T \int_{\mathbb{R}^N} (\partial_t \varphi + b^i(t, x) \cdot \nabla \varphi) d\delta_t dt = 0.$$

Let  $\psi \in \mathcal{C}_c^0([-\infty, T] \times \mathbb{R}^N, \mathbb{R})$ . We can find  $\varphi \in \mathcal{C}_c^1([-\infty, T] \times \mathbb{R}^N, \mathbb{R})$  so that  $\psi = \partial_t \varphi + b^i(t, x) \cdot \nabla \varphi$ . Hence, for any  $\psi \in \mathcal{C}_c^0([-\infty, T] \times \mathbb{R}^N, \mathbb{R})$ , we have  $\int_0^T \int_{\mathbb{R}^N} \psi d\delta_t dt = 0$ , which implies  $\delta \equiv 0$  a.e. so  $\rho = \sigma$  a.e.. Consequently, we have  $b^i(t, x) = V^i(x, \sigma * \eta^i)$ , and  $\rho$  is a Lagrangian solution of (24). □

## 5. CONCLUSION

In the Kruřkov framework, we are able to prove existence and uniqueness of weak entropy solution for the equation  $\partial_t \rho + \operatorname{div}(\rho V(x, \rho, \rho * \eta)) = 0$ . Furthermore, we can prove uniform bound in  $\mathbf{L}^\infty$  if  $V = v(\rho) \vec{W}(x, \rho * \eta)$ , with  $v(1) = 0$ . However, the required hypotheses are very strong: we need indeed  $V \in \mathcal{C}^2 \cap \mathbf{W}^{2,1} \cap \mathbf{W}^{2,\infty}$ .

In the optimal transport theory framework, we can treat only equations such that  $\partial_t \rho + \operatorname{div}(\rho V(x, \rho * \eta)) = 0$ . For this equation, we have only  $\mathbf{L}^\infty$  bound that are exponentially growing in time. The hypotheses are nevertheless weaker since we only ask  $V \in \mathbf{Lip} \cap \mathbf{L}^\infty$ , but we are no longer able to prove the Gâteaux-differentiability of the semi-group.

## REFERENCES

- [1] C. Appert-Rolland, P. Degond, and S. Motsch. Two-way multi-lane traffic model for pedestrians in corridors. *Networks and Heterogeneous Media*, 6(3):351–381, 2011.
- [2] N. Bellomo and C. Dogb e. On the modelling of traffic and crowds - a survey of models, speculations, and perspectives. *SIAM Review*, 2011. To appear.
- [3] F. Bouchut and B. Perthame. Kruřkov’s estimates for scalar conservation laws revisited. *Trans. Amer. Math. Soc.*, 350(7):2847–2870, 1998.
- [4] R. M. Colombo, M. Garavello, and M. L ecureux-Mercier. A class of non-local models for pedestrian traffic. *Preprint*, 2010.
- [5] R. M. Colombo, M. Herty, and M. Mercier. Control of the continuity equation with a non local flow. *ESAIM: COCV*, 2010.
- [6] R. M. Colombo and M. L ecureux-Mercier. Nonlocal crowd dynamics models for several populations. *Acta Mathematica Scientia*, to appear.
- [7] R. M. Colombo and M. Mercier. An analytical framework to describe the interactions between individuals and a continuum. *Journal of Nonlinear Science*, to appear.
- [8] V. Coscia and C. Canavesio. First-order macroscopic modelling of human crowd dynamics. *Math. Models Methods Appl. Sci.*, 18(suppl.):1217–1247, 2008.
- [9] G. Crippa and M. L ecureux-Mercier. Existence and uniqueness of measure solutions for a system of continuity equations with non-local flow. *Preprint*, 2011.
- [10] W. Daamen and S. Hoogendoorn. Experimental research of pedestrian walking behavior. In *Transportation Research Board annual meeting 2003*, pages 1–16. National Academy Press, 2007.
- [11] M. Di Francesco, P. A. Markowich, J.-F. Pietschmann, and M.-T. Wolfram. On the Hughes’ model for pedestrian flow: the one-dimensional case. *J. Differential Equations*, 250(3):1334–1362, 2011.
- [12] D. Helbing and A. Johansson. Pedestrian, crowd and evacuation dynamics. *Encyclopedia of Complexity and Systems Science*, pages 6476–6495, 2010.
- [13] D. Helbing, A. Johansson, and H. Z. Al-Abideen. Dynamics of crowd disasters: An empirical study. *Phys. Rev. E*, 75:046109, Apr 2007.
- [14] D. Helbing, P. Moln ar, I. Farkas, and K. Bolay. Self-organizing pedestrian movement. *Environment and Planning B: Planning and Design*, 28:361–383, 2001.
- [15] R. L. Hughes. A continuum theory for the flow of pedestrians. *Transportation Research Part B: Methodological*, 36(6):507–535, 2002.
- [16] R. L. Hughes. The flow of human crowds. *Annual Review of Fluid Mechanics*, 35:169–182, 2003.
- [17] S. N. Kruřkov. First order quasilinear equations with several independent variables. *Mat. Sb. (N.S.)*, 81 (123):228–255, 1970.
- [18] M. L ecureux-Mercier. Improved stability estimates on general scalar balance laws. To appear on *J. of Hyperbolic Differential Equations*, 2011.
- [19] B. J. Lucier. A moving mesh numerical method for hyperbolic conservation laws. *Math. Comp.*, 1986.
- [20] B. Maury, A. Roudneff-Chupin, and F. Santambrogio. A macroscopic crowd motion model of the gradient-flow type. *Mathematical Models and Methods in Applied Sciences*, 20(10):1787–1821, 2010.
- [21] B. Maury, A. Roudneff-Chupin, F. Santambrogio, and J. Venel. Handling congestion in crowd motion modeling. *Preprint*, 2010.
- [22] B. Piccoli and A. Tosin. Time-evolving measures and macroscopic modeling of pedestrian flow. *Archive for Rational Mechanics and Analysis*, pages 1–32, 2010. 10.1007/s00205-010-0366-y.
- [23] C. Villani. *Topics in optimal transportation*, volume 58 of *Graduate Studies in Mathematics*. American Mathematical Society, Providence, RI, 2003.