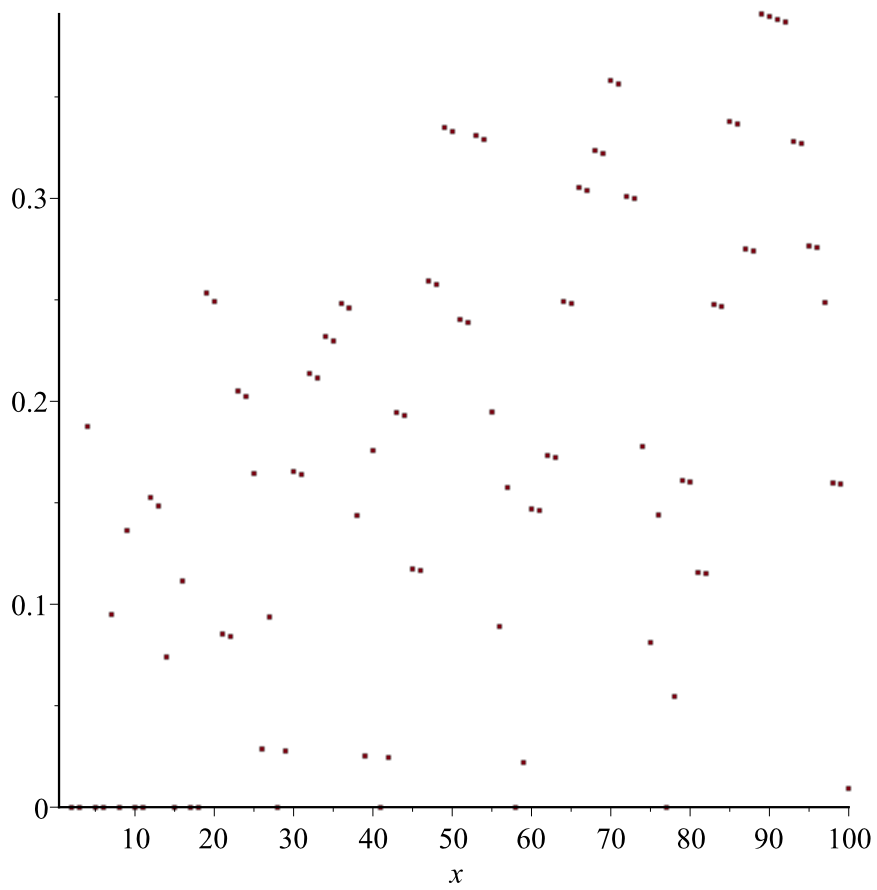


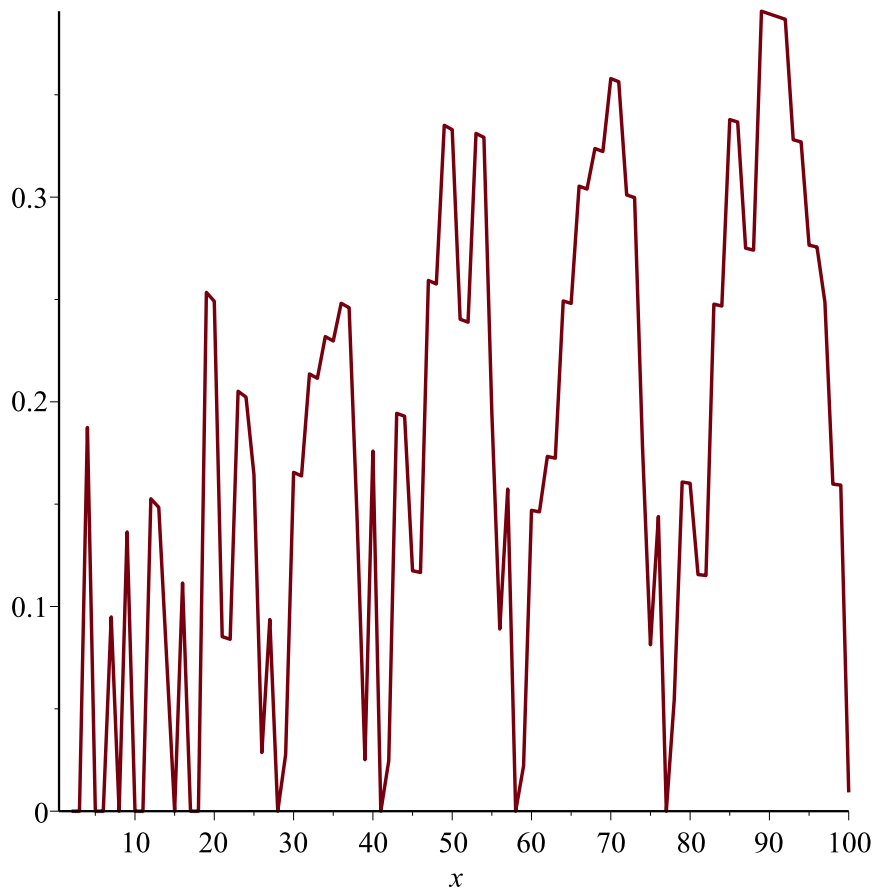
```

> read "gsh10p6.m":
> time();
                                0.924                                (1)
> anames();
unprotect, Vector, iroot, infolevel, whattype, march, ListTools, gsh, CommandCompletion, (2)
  _UIUtils, Security, _savedcompletions, debugger/no_output, myiroot, sprintf, value, nprintf,
  convert/list, StringTools, protect, type/Vector, ExternalCalling, convert/set
> gsh[2];whattype(gsh);evalf(gsh[56]);
                                1
                                symbol
                                1.411764706                                (3)
> for n from 1 to 100000 do nf:=evalf(n);gshf[n]:=log(evalf(gsh[n]
)))/(nf*log(nf))^(1/4); od:
> lis:=[[nn,gshf[nn]] $nn=1..100000];
                                [Length of output exceeds limit of 1000000] (4)
> lis1:=lis[1..100];
lis1 := [[1, Float(undefined) ], [2, 0.], [3, 0.], [4, 0.1874709311], [5, 0.], [6, 0.], [7, (5)
  0.09490362794], [8, 0.], [9, 0.1364217320], [10, 0.], [11, 0.], [12, 0.1526334676], [13,
  0.1484284203], [14, 0.07395095816], [15, 0.], [16, 0.1114708825], [17, 0.], [18, 0.],
  [19, 0.2534465718], [20, 0.2491392843], [21, 0.08528533528], [22, 0.08398023139],
  [23, 0.2051513270], [24, 0.2022971050], [25, 0.1644274949], [26, 0.02868083017],
  [27, 0.09366566709], [28, 0.], [29, 0.02767937148], [30, 0.1655290908], [31,
  0.1637843912], [32, 0.2135940252], [33, 0.2114892798], [34, 0.2318667137], [35,
  0.2297218324], [36, 0.2481315872], [37, 0.2459689401], [38, 0.1436270621], [39,
  0.02516714866], [40, 0.1759121638], [41, 0.], [42, 0.02458178930], [43,
  0.1943688822], [44, 0.1929607902], [45, 0.1174438641], [46, 0.1166323222], [47,
  0.2592840966], [48, 0.2575715842], [49, 0.3350868578], [50, 0.3329674336], [51,
  0.2403512966], [52, 0.2388929235], [53, 0.3311202178], [54, 0.3291897178], [55,
  0.1947303521], [56, 0.08899595847], [57, 0.1573578664], [58, 0.], [59,
  0.02209345057], [60, 0.1469875419], [61, 0.1462340272], [62, 0.1733067133], [63,
  0.1724479595], [64, 0.2492620025], [65, 0.2480668475], [66, 0.3053613500], [67,
  0.3039431400], [68, 0.3237464894], [69, 0.3222886600], [70, 0.3579282046], [71,
  0.3563641018], [72, 0.3010584461], [73, 0.2997806597], [74, 0.1776071916], [75,
  0.08129150153], [76, 0.1439430582], [77, 0.], [78, 0.05441105714], [79,
  0.1608096283], [80, 0.1601895610], [81, 0.1155941584], [82, 0.1151598112], [83,
  0.2477068857], [84, 0.2467992960], [85, 0.3378850527], [86, 0.3366771448], [87,
  0.2750646197], [88, 0.2741046368], [89, 0.3908348526], [90, 0.3895024815], [91,
  0.3881898888], [92, 0.3868965638], [93, 0.3280361019], [94, 0.3269674525], [95,
  0.2765247787], [96, 0.2756435131], [97, 0.2486378383], [98, 0.1597953670], [99,
  0.1593021943], [100, 0.009187265451]]
> plot(lis[1..100],x=1..100,style=point,symbol=point);

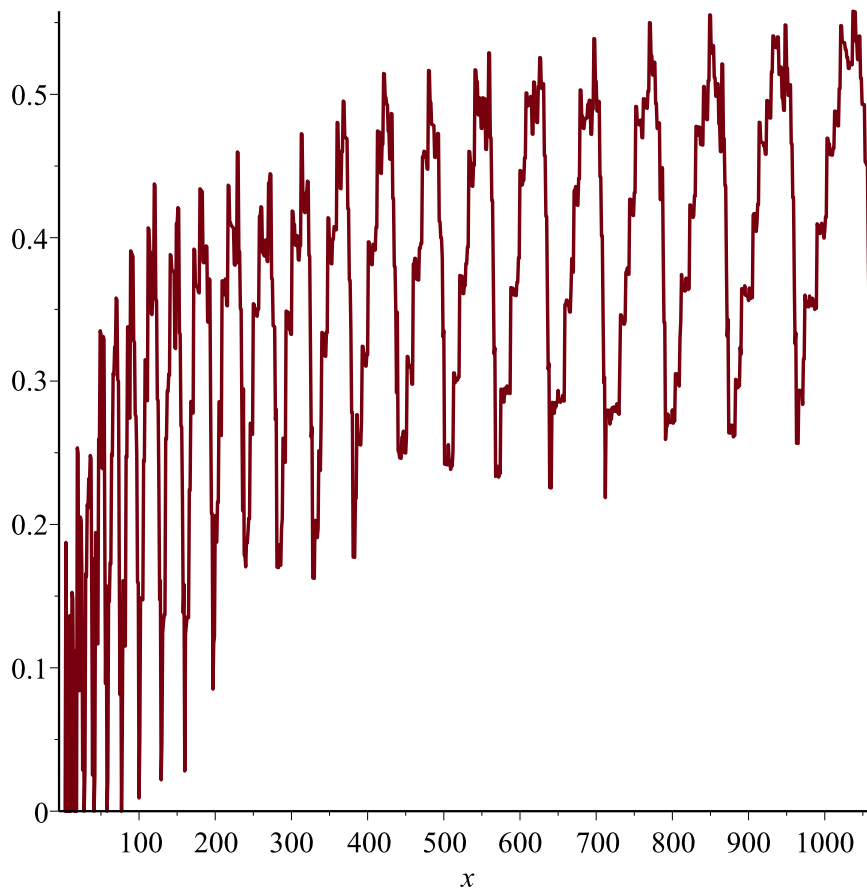
```



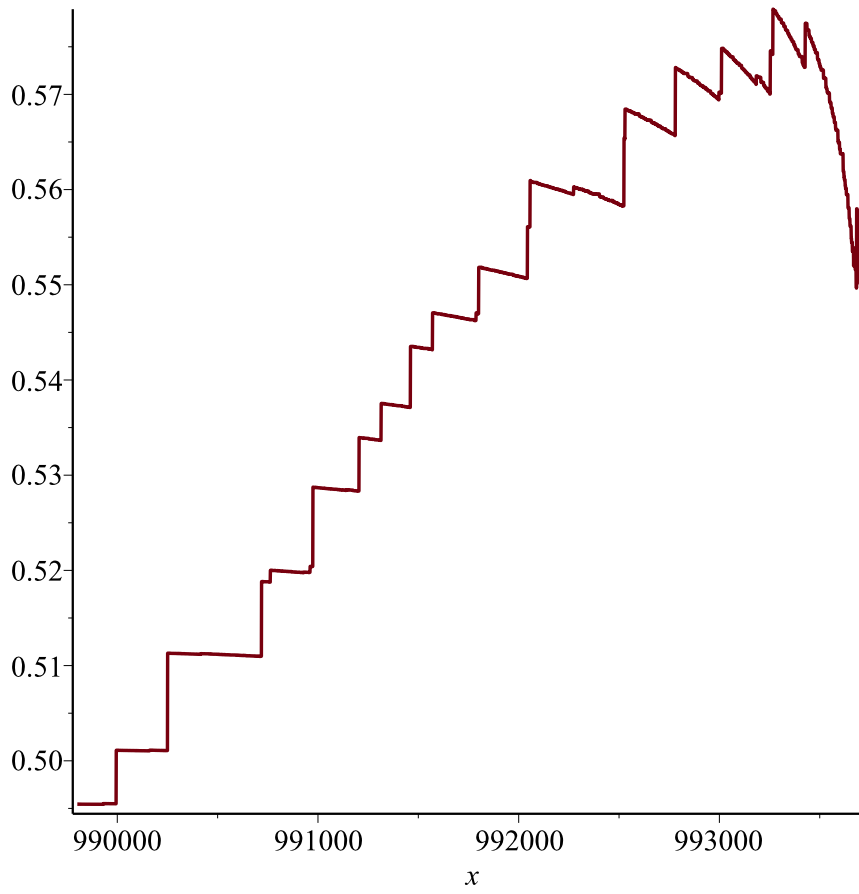
```
> plot(lis[1..100],x=1..100,symbol=point);
```



```
> plot(lis[1..1060],x=1..1060,symbol=point);
```



```
> plot(lis[989801..993730],x=989801..993730,symbol=point);
```



[990000, 30.46761500]

(6)